



Acres	Name of Grantee No. of Survey	Book	Page
	labor Anderson Thomas		314
640 a.	Avery <sup>23</sup> Willis <sup>John Little</sup>	C (48)	41
labor	Avery <sup>31</sup> William <sup>Willis</sup>	A	459
labor	Applegate <sup>38</sup> John	A	143
60 a.	Austin <sup>19</sup> Andrew	C	214
	A Adams & Company	H	116, 118, 163, 167, 168
	Adams Beaty & Co.	H	146, 147
	Adams Beaty & Co.	H	172, 173
	Moulton <sup>272, 273, 274, 275</sup>		203, 204, 211, 212, 270, 271
	Armendariz Juan	H	167
20 a.	Arnold <sup>7</sup> Colberd	B	160
	Allen Wm.	I	336, 337, 318
20 acres	Anderson <sup>83</sup> Wm. H.	K	7
60 a.	Abbott <sup>5</sup> Alexander	K	154
60 a.	Ames <sup>71</sup> John	K	343 <sup>351</sup>
60 a.	Allen <sup>11</sup> J. B. G.	K	413
60 a.	Arnold <sup>15</sup> F. C.	K	419
60 a.	Allen <sup>112</sup> Milton	K	442
	Allison William		
20	Allen <sup>15</sup> George	B	163
40	Arnold & Barrett <sup>30, 31, 32</sup>	H	313
40 a.	Allen <sup>73</sup> Benj.	G	285, 286
40 @.	Anderson <sup>87</sup> Wm.	G	438
20 acres	Allen <sup>56</sup> Thos. G. in Federal	G	460
20 a.	Arnold <sup>12</sup> Byrd	G	473
600	Anderson Mathew	B	7
600	Adkinson A. J.	"	9
600	Allen, Samuel S.	"	28
780	Anderson Carter	"	36
320	Alexander John R.	"	74
320	Adkinson H. B.	"	75
"	"	"	76
640	Addler David A.	"	105

320	Amolo Colford	B 160.
320	Allen George	" 163 <sup>5</sup>
40	Algaier John W	" 52 <sup>2</sup>
1210	Arredondo Juan Jose Martinez	142 <sup>2</sup>
320	Adkisson, Allen. J.	" 270 <sup>5</sup>
320	Anderson, Christian	" 276 <sup>5</sup>
640	Arinstrong, John	" 48 <sup>5</sup>
106	Alexander <sup>46</sup> R. Co. (3)	G 504
	Adams Beaty & Moulton	H 274, 275, 272
151.9	Adams, Beaty & Moulton	27 1-3

160.00	<sup>552</sup> Bilberry, L.S.	27 101-102
150.9	Barton, W.W.	27 88-89
2 170.8	<sup>94</sup> Beckham	27 62-63

No of acres	Name of Grantee, No of survey.	Book.	Page.
409 a.	Brooke John A. G.	A	495
231 a.	Brooke John <sup>28</sup> A. G.	A	494
1280 a.	Brooke <sup>59</sup> John C.	B	142
25 labors	Buckman <sup>70</sup> Oliver	A *	237
3/4 league	Bacon <sup>62</sup> Sumner	A	341
640 a.	Barton <sup>10</sup> W. has of Bray John	AB	168 178
	Barnes T. S.		
320 a.	Blessing <sup>3</sup> Henry	B	172
320 a.	Beebe <sup>5</sup> E.	I	164 144
	Beckham <sup>16</sup> John	I <sup>2.33</sup>	226
	do 225, 221, 213, 293, 233.		
80 a.	Bell <sup>44</sup> William	C <sup>(59)</sup>	50
945 a.	Bell <sup>24</sup> William		
240.55 7/8 a	Bell <sup>82</sup> William	G.	345
320 a	Benson <sup>1103</sup> William	B	140
521 a.	Barker <sup>74</sup> William	H	11
	Bittick <sup>1</sup> Jonathan	I	126
	Barnes A. H.	H	16
	B.B.B. & C. R.R. Co.	H <sup>2.23</sup>	218, 23 298
	Baldwin James	H	33
	Bergman S. M.	H	63, 64, 65.
	Brooks & Burleson <sup>25 &amp; 29</sup>	H	107, 161, 162
	Brooks J. H. & Co	H <sup>327</sup>	117, 119, 124, 125
	Beaty Seal & Co	H	126, 127, 128, 129, 223
	Beaty Seal & For. ward	H	129, 130, 131, 132, 158, 160, 136, 137, 138, 139, 140, 143, 280, 281, 282, 283.
	Byrne J. W.	H	239
	Butler George	II	108, 109, 110, 111, 112, 113, 114, 115.
8 1/2 labors	Bain <sup>71</sup> Noel M.	A *	262
18 1/2 labors	Betts <sup>1</sup> Jacob	A	30
280 a	Brite <sup>65</sup> Thomas	I B *	380 215
	Bright John <sup>63</sup> M.	B *	213
120 <sup>000</sup>	Blackwell Richard	K	248

No. of acs	Name of Grantor No. of Survey	Book	Page
320	Burleson Jonathan <sup>645</sup>	C	237
75	Bond Henry	G <sup>457, 461</sup>	458
274	Bonham <sup>233</sup> Austin L. D.	F	241
1 later	Barton E. W. heirs of A	A	166
320	Bond A. J. {See in the name of A. J. Boyer		
8's lbr	Bray 72 John Barton <sup>645</sup>	A	454
274	Bonham <sup>233</sup> Austin L. D.	F	242
320	Beckhup <sup>518, N. 513</sup> John	I	293
120	Burchard Benedikt	G <sup>361</sup>	364
320	Bowles Augustine	B	79
160	Bell A. F.	K	347
640	Baxter <sup>53</sup> W. P.	C	160
160	Bazard Julian J.	K	160
1 later	Blush <sup>8</sup> &	I	112
	Bell W.		
26 lbr	Brandon Wm M.	A	475
100	Burleson John	I	296
77	Brace <sup>126</sup>	I	297
160	Baldwin J. K.	K	438
160	Baldwin Kinchols	K	213
640	Browning <sup>412</sup> C. C.	F	141
320	Bradford James	K	1-47
320	Bradford William <sup>78</sup>	K <sup>22</sup>	280-282
320	Blackwell Wm A.	K	29
320	Barfoot <sup>402</sup> William	K	39
160	Boutlanhouse Daniel <sup>109</sup>	K	52
160	Bishop Wm Henry <sup>702</sup>	K	67
160	Bardsley Adria J. <sup>505</sup>	K	113
118 1/4	Barton Milford <sup>645</sup>	K	115
31	Bishop Samuel J. <sup>100</sup>	K	156
560	Bayard Julian J.	K	160
320	Blumen Alexander	K	166
160	Baldwin Kinchols <sup>518, N. 513</sup>	K	185
160	Barton James <sup>518, N. 513</sup>	K	186
160	Bradford James <sup>518, N. 513</sup>	K	187
24.2	Burton W. W.	27	53

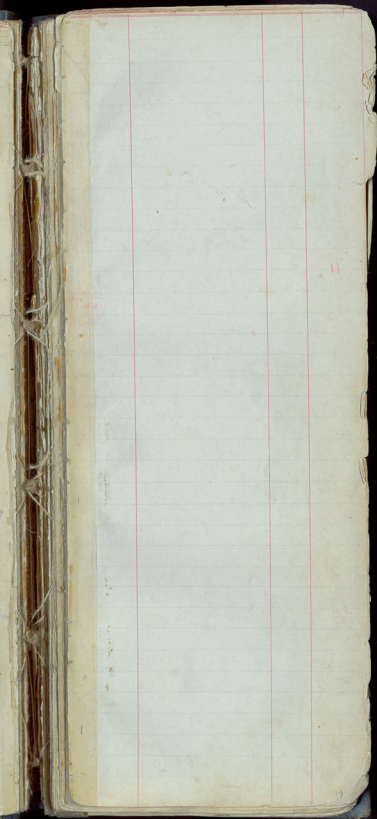
No. of Acres	Name of Grantee No. of Survey	Book	Page
160 acres	Buck <sup>902</sup> Eliska	K	175
160 acres	Bohler <sup>905</sup> D. in Boston creek	K	195
160 a.	Brickta <sup>609</sup> F. V.	K	206
99 1/2 acres	Bilberry <sup>612</sup> John	K	216
160 acres	Bell <sup>615</sup> A. F.	K	218
	Basford <sup>625</sup> B. D.	K	229
	Baxter <sup>629</sup> Morris	K	231
	Baker <sup>631</sup> Elina	K x	242
160 acres	Blackwell <sup>632</sup> Richard	K	248
160 acres	Buttry <sup>636</sup> John	K	252
160 acres	Baily <sup>644</sup> Sarah <sup>ma</sup>	K	268
160 acres	Basford <sup>290</sup> B. D.	K	283
160 a.	Babeock <sup>541</sup> Henry M.	K	284 1/2
160 a.	Battam <sup>640</sup> Charles	K	308
142 a.	Blanchard <sup>646</sup> Thom <sup>as</sup>	K	320
80 a.	Bankston <sup>652</sup> Abner	K	327
160 acres	Biegemore <sup>657</sup> J. L.	K	332
160 acres	Briggs <sup>7</sup> Elias	K	333
80 acres	Brookshire <sup>3</sup> Samuel	K	335
80 acres	Bingham <sup>70</sup> Harmon	K	342
160 a.	Bell <sup>75</sup> A. F.	K	347
160 acres	Bilberry <sup>750</sup> J. C.	K	404
	Bilberry <sup>750</sup> B.	K	405
160 a.	Bilberry <sup>750</sup> L. V.	K	407
160 a.	Briggs <sup>7</sup> J. M.	K	408
160 a.	Boulders <sup>7</sup> E.	K	411
160 a.	Black <sup>7</sup> J. C.	K	376
160 a.	Bounds <sup>752</sup> William	K	383
160 acres	Baker <sup>6</sup> Shepherd	K	114
52 acres	Brooks <sup>11</sup> W. S.	K	215
160 a.	Bailey <sup>67</sup> Sarah <sup>ma</sup>	K	421
160 a.	Beck <sup>7</sup> Joseph	K	469
225 a.	Baldwin <sup>7</sup> Kinchen	F	426
	Butler <sup>361</sup> Barnett	I	42-58
320 a.	Brewster <sup>486</sup> Andrew	F	249
225.72	Brown <sup>486</sup> Thomas	F	386

No of Acres	Name of Grantee No. of Survey	Book	Page
	Ruchman, Benedick	Q	361-364
640 a.	Barton John	C	180
640 a	Benson <sup>187</sup> Herman	x B	250, 251
640 a	Bracken <sup>134</sup> James	C	264
8 1/2 a	Bolinger <sup>135</sup> John	A	519
65 7/8 a	Burns <sup>77</sup> Woial Co.	G	444, <sup>445</sup>
320 a.	Ballard J. P.	C	180
370 1/2	Blokey <sup>32</sup> Lemuel	A	583-4
442	B.B.B. & Co. R.R. Co.	D	159
198	B.B.B. & Co. R.R. Co. <sup>on Cross Creek</sup>	D	161
320 a.	B.B.B. & Co. R.R. Co.	D	163
320 a	B.B.B. & Co. R.R. Co.	D	165
640 a	B.B.B. & Co. R.R. Co.	D	203
320 a	Bundick <sup>33</sup> Thomas W.	G	450
431 a.	Bonus <sup>670</sup> William [Bauer]	F	267
	Bradley <sup>Brantly</sup> James		
103 a	Bird <sup>75</sup> Thomas	G	442
217 a.	Bird <sup>81</sup> Thomas	G	448
160 a	Beck <sup>8</sup> Albert <sup>For map &amp; road by Chas. Hartsorn.</sup>	K	473
	Beck Joseph	K	469
851 a	Bass Archibald	I	376-77
37 a	Ballard Chr. H.	F	384
	<sup>on Cross Creek East end of J. C. C.</sup> Baker Sina	K	242
80 a.	Baxter <sup>9</sup> Morris	K	478
160	Bawcom <sup>19</sup> J. W.	K	302
	Barker <sup>14</sup> Mon.	H	11
640 a.	Brown H. D. <sup>Covers 10 1/2</sup>	H	392
160 a.	Bankston <sup>651</sup> , Levi <sup>on Bartons creek</sup>	K	365
167 1/2	Bergin, Dainubshany	H	411
10	" " " "	"	458
34	" " " "	"	459
56 1/2	" " " "	"	460
53	" " " apto	"	461
36	" " " "	"	462
1280	Biggs Wilson	B	1
320	Baily Alexander	C	293
80	Bennet <sup>109</sup> Melly H.	C	532

No. of Acres	Name of Grantee and No. of Survey	Book	Page
8 1/2	Labon Byron <sup>d</sup> David, Y	B	3
640	Barrer <sup>4</sup> Abraham B.	"	8
1280			
8 1/2	Labon Bass <sup>d</sup> William, A.	"	14
640	Brown <sup>11</sup> Lorenzo	"	17
1280	Biggs <sup>d</sup> D. W.	"	20
1280	Boyce <sup>123</sup> Aaron F.	"	21
8 1/2	Labon Beck <sup>d</sup> T. B.	"	22
640	Brown, J. Porter	"	52
1280	Beal <sup>6</sup> John H.	"	67
8 1/2	Labon Boyd <sup>20</sup> John	"	71
640	Bartleson Francis	"	77
640	Burnham <sup>11</sup> James G.	"	91
320	Barrett <sup>17</sup> D. P.	"	110
320	Blake <sup>3</sup> L. C.	"	113
320	Blake <sup>1</sup> L. C.	"	114
640	Bratton <sup>1</sup> Robert	"	132
640	Bratton <sup>2</sup> John	"	133
407	Brooke <sup>77</sup> John, S. G.	"	141
1280	" <sup>7</sup> John, C.	"	142
320	Baptiste <sup>12</sup> John	"	145
8 1/2	Birdsall <sup>36</sup> John	"	150
640	Barber <sup>17</sup> William	"	152
640	Bretham <sup>16</sup> Alfred	"	154
640	Bryan <sup>11</sup> John	"	159
640	Bell <sup>111</sup> William W.	"	161
	Blessing Henry	"	172
320	Bell <sup>17</sup> Hiram	"	183
640	Barker <sup>33</sup> Samuel J.	"	194
320	Bennet <sup>7</sup> T. W.	"	75
320	" " "	"	151
1280	Basquez <sup>18</sup> Rafael	"	141
640	Beauford <sup>7</sup> Daniel	"	134
640	Bruce <sup>5</sup> Francis	"	204
640	Branard <sup>31</sup> Geo. A.	"	203
320	Bratton <sup>1</sup> George	"	199
X 320	Brewster <sup>8</sup> Andrew	"	173-173

<i>Page</i> Acres	<i>Name of Grantee, and No. of Survey</i>	<i>Book</i>	<i>Page</i>
84.2	Burton W.W.	27	53
50	Burr Joshua	B	207
145	Bedinger, H.C.	27	68-59
50	Bester George	"	215
170.8	Beckham	27	62-63
600	Burke James B.	"	225
600	Byrne William C.	"	227
600	Brown E. W.	"	249
600	" " "	"	248
600	Benson Herman	"	280
600	" " "	"	251
600	Bell William	"	252
600	Brown William	"	253
600	Bennett Wesley W.	"	57
600	" " "	"	53
600	Bratton William	"	298
600	Barnhart Joseph	"	284
640	Butts B.H.H.	"	103
320	Burke William B.	"	109
640	Baker Horace N.	"	22
640	Barton Seth (J. De Cardenas)	"	78
320	Bowles Hers of Augustine	"	79
	Benedict J. F.	"	312, 313
	Bertrand Gustavus A.	"	315
	Baker Philip, decd.	"	328-329
	" " "	"	329
160	Bilberry John <sup>swishes</sup>	A	507
160	Brandt John	A	497
160	Baker J. M.	"	491
	Brewer C. A.	"	513
370	Barnes Taylor S. (copy)	I	378
120	Borum Herman	I	368
	Burroughs L. M.	II	501 & 509
	Barton Jerry	A	477
11a	Bankston Jerry	"	526
63 1/2	Barton John	"	479
143 3/4	" George W.	"	480
73 1/2	Burleson D. C.	"II"	519
	Bowling W. H. & Co.	A	531
	148.74 Bedinger, H.C.	27	51-52





84.2

145

170.8

640

640

640

640

640

640

640

640

640

640

640

640

640

640

640

640

640

640

640

640

640

640

640

640

640

640

640

640

640

640

640

640

640

640

No of acres	Name of Grantee No of Survey	Book	Page
1280 <sup>640</sup> acres	Collins Thomas C. <sup>43<sup>rd</sup> on Spring Creek</sup>	B	87
640 a.	Compton Robert <sup>32<sup>nd</sup> on Spring Creek</sup>	B	35
26 labors	Caldwell A. C. <sup>5<sup>th</sup></sup>	A	527
160 acres	Childers B. F. <sup>Wm H. Harris of</sup>	F	354
one league	Castro Mariquite <sup>5<sup>th</sup></sup>	A	62
8 1/2 labors	Cushing Samuel <sup>7<sup>th</sup></sup>	A	342
26 labors	Caldwell William	A	336
1/2 sec. 1 labor	Cunningham S. C. <sup>5<sup>th</sup></sup>	A	340
1149 a.	Coleman James <sup>2<sup>nd</sup></sup>	B	38
320 acres	Casner James	B	267
1280 a	Conrad Peter <sup>7<sup>th</sup></sup>	G	120, 121
320 a	<sup>no 109</sup> Durnonond Wisky <sup>5<sup>th</sup></sup>	C	83
640 a.	Conrad Peter <sup>112<sup>th</sup></sup>	E	161
369 a.	Chambers Thos. J.	I	249
	Cawfield W. S.	H	36
67 1/2 acres	Chapple Robert <sup>6<sup>th</sup></sup>	H	38
	Crawford J. F.	H	166
26 labors	Captas Elijah <sup>6<sup>th</sup></sup>	A	11
	Corbin William S.	I	290
1 labor	Carleton W.		
480	Booke W. H. <sup>43<sup>rd</sup> on Spring Creek</sup>	G	391
1280 acres	Chambers Thos. Jeff.	G	363
640 a.	Chamberlin Teri <sup>4<sup>th</sup></sup>	B	120
640 acres	Cole James <sup>6<sup>th</sup></sup>	IG	215
763 acres	Cammang Philip H. <sup>46<sup>th</sup></sup>	F	80
320 acres	Choate John Ab. <sup>105<sup>th</sup></sup>	G	406
160 acres	Cohen William	K	461
160 a	Collier J. A.	K	212
	Compton A. G.	L	
320 a.	Cherry Joel <sup>101<sup>st</sup></sup>	K	17
320 a.	Casey Joel <sup>102<sup>nd</sup></sup>	K	33
319 acres	Caldwell E. H.	K	38
142 a.	Cummings Cha. C. <sup>5<sup>th</sup></sup>	L	58
160 a.	Crawford John W. <sup>51<sup>st</sup></sup>	L	60
160 a	Cerry Robert W. <sup>103<sup>rd</sup></sup>	K	72
287.12 3/4	C. & M. R. & Co. <sup>172<sup>nd</sup></sup>	27	67-69
277.76 N 1/2	C. & M. R. & Co.	27	70-71

No. of Acres	Name of Grantee No. of Survey	Book	Page
84.	160 Cherry <sup>710</sup> James	K	74
141	160 Cherry <sup>711</sup> Joseph	K	75
170.8	320 Cravens <sup>1192</sup> George	K	80-197 <sup>corrected</sup>
	160 Copton <sup>161</sup> W. H.	K	97.
	320 Choate <sup>421</sup> John S.	K	106
	160 Cansler <sup>532</sup> William	K	120
	160 Conrade <sup>176</sup> Agustin	K	142
	160 Cox <sup>514</sup> Caleb	K	152
	160 Creamer <sup>3</sup> Elias	K	137 & 38
	320 Conley <sup>1</sup> A. C.	K	159
	160 Cade <sup>507</sup> J. H.	K	181
	160 Cade <sup>516</sup> J. H.	K	262
	160 Cade <sup>132</sup> Columbus	K	264
	160 Craven <sup>639</sup> Richard W.	K	276
	160 Cox <sup>740</sup> Benoni	K	293
640	160 Conden <sup>653</sup> R. T.	K	328
320	160 Conrade <sup>7</sup> William	K	339
640	160 Callen <sup>4</sup> M. M.	K	338
640	80 Caldwell <sup>710</sup> J. M.	K	298
320	160 Casely John	K	415
	160 Cawfield <sup>53</sup> James	K	386
	160 Cawfield <sup>53</sup> J. G.	K	387
	160 Cawfield <sup>533</sup> William	K	388, 380
	34 Crawford <sup>26</sup> J. C.	K	433
160	160 Carter Lucinda	K	445
160	160 Carpinter <sup>32</sup> W. L.	K	454
	160 Colley John T.	K	460
	160 Clayton <sup>3</sup> C. J.	K	467
370	143 1/2 Cole <sup>33</sup> J. P.	F	214
12 1/2	5 1/2 Calvit Isaac	F	156.
	Chaume M. De		
	Clark J. O.	F	285, 346
110	540 Curtis <sup>1</sup> Hinton	C	(16)
160	185 Ballison <sup>45</sup> James <sup>By St. John, Edm.</sup>	G	436
143	36 Cogner David	F	351
73 1/2	173.2 1/2 C.T. M.C. R.R. Co.	27	96-98

ceded  
7

6

80

6

No of acres	Name of Grantee No of Survey	Book	Page
	Cornea <sup>80</sup> Charles	F	370
160 a.	Collier <sup>604</sup> James A.	K	112
160 a.	Charatt <sup>22</sup> Conrad	F.	407
H	Drummond <sup>109</sup> Wesley	C	83
	Camman's P. No.	F	80
	Cunningham A.S.	I	322
320 a.	Cooper <sup>91</sup> Campbell	B	128
86 acres	Cabron Pirrie Francis	H	344
160 a.	Cliffston <sup>62</sup> Josiah	K	474
640 a.	Central R.R. Co. Montgomery	H	3387
320	Cody <sup>101</sup> Michael	G	474
79 a.	Chappol <sup>57</sup> Robt.	F	392
96 a.	Childress <sup>794</sup> B. F.	G	426.7
40 a.	" " "	G	438.9
96 a.	" " " 414 & 415	G.	439
167 1/2 acres	College <sup>No 62</sup> Gaudalupe	I	165
131 acres	Coleman <sup>151</sup> James	F	157
225 acres	Conner <sup>No 610</sup> Mary & John made for Kinchela Buldwin	F	426
640 acres	Campbell <sup>No 70</sup> Mary F.	F.	413
	Childress John	I	276
	Chaum <sup>on head of Willmarren Creek</sup> Mel D.	F	266
640 a.	Cullen Ed	H	393
	H D		
242 a.	Chubb <sup>144</sup> John	F	427
	on Mayket Creek		
1280 a.	Callison <sup>185</sup> J G	H	367
640.	Consolidated Oil & Gas Dev atm & Manufacturing Co	FF	342.7.3
350 a P	Cunningham <sup>40</sup> D C	a	502
400 a P	Chaffin <sup>11</sup> C C	a	498
	Black Blanche B	G	405.415
	Chicago Texas & Mex		
	Central R.R. Co	H	438 437
24 a.	Childress B F	G,	401
57 a			404
13.32	Colley, W. T.	27	24-8

100.49 Craig, Richard 1961 27-19  
 239 Craig, Richard 27-31-33  
 239 Colley, W.T. 27-64-65

D+W #97 H 254  
 D+W #98 H 257  
 D+W #99 H 258  
 D+W #100 H 259  
 D+W #101 H 260

D+W #102 H 261  
 #103 H 262  
 #104 H 263  
 #105 H 264  
 #106 H 265

D+W #91 H 248  
 D+W #92 H 249  
 D+W #93 H 250  
 D+W #94 H 251  
 D+W #95 H 252  
 D+W #96 H 253

613.61 A Cox, Alfred 2 part 5. M. 3 H 52  
 217.75 Cox, Alfred Correlated 27-127-128 82  
 217.75 Alfred FN. of HEATW RRC Co Sur H 54 27 pg 180

No of acres	Name of Grantee No of Survey	Book	Page
640 acres	Dunlap James T.	H	54
320 a	Darling <sup>102</sup> Socrates	C	268
320 a	Drummond <sup>109</sup> Wesley	C	83
215 1/2 acres	Davis George W.	A	200
347 a.	Davis James P.	A	201
280 a.	Davis <sup>13</sup> John	C	209
640 acres	Denson <sup>36</sup> James W.	C	297
3/4 labors	Davis <sup>30</sup> W. J.	A	376
	Duval <sup>Feb 20 1861</sup> Jno	H	66, 67, 68,
	Dallas <sup>Michie</sup> W. H.	H	244
	41, 262, 263, 264, 265, 267 - 254, 257, 258, 259, 260, 45, 246, 247, 248, 249, 250, 251, 252, 253,		
476 a.	Downman Henry M.	I	269
	Doyle James Fisher		
100 a.	Dunlap <sup>36</sup> Alexander	I	320
40 a.	Dunlap <sup>53</sup> Alexander	F	436 419
26 labors	Davis <sup>29</sup> Nathan Jr	A	368
160 acres	Davis <sup>18</sup> John	K	50
160 acres	Degnan <sup>53</sup> J. C.	K	56
160 acres	Durham <sup>70</sup> Solomon S.	K	66
150 acres	Davidson <sup>130</sup> Thos D.	K	101
160 acres	Dawson <sup>2</sup> Riley	K	136
160 acres	Danner <sup>511</sup> J. G.	K	205
160 acres	Draper <sup>101</sup> George W.	K	246
160 acres	Davis <sup>153</sup> Lindsey	K	348
160 a	Davis <sup>35</sup> J. M.	K	349
160	Decker Theodore F.	K	465
160 a	Dillingham <sup>70</sup> John	K	468
	Drummond Wesley	C	83
459 a	Gitmer <sup>611</sup> George	G	431
1 labor	Delgado <sup>41</sup> Juan	I	257
	Duggan J. H.		
50	Dunbar <sup>24</sup> & others	H	317
1 labor	Dalton <sup>70</sup> Osborn	I	112
2 1/2 Labors	Duby <sup>56</sup> Richard, heirs of	A.	446
labor	Dunn Joseph C.	A.	374

Dossey<sup>69</sup> H.

" applied to the application of  
W & Horatio

H. 530

170.8 351 a. Day Bond & Cattle Co. N<sup>o</sup> 79 H 463

160 a Davis<sup>73</sup> B F a 473

640a De La tuly R.S. MA Bin  
De Chaum. M.F. 266

Dr. Chaum MF 266

Drummond, Wesley	C	83
------------------	---	----

299.4 Dallas & Wichita RR Co. 27 4-5

100.49	Drapes, G. A.	27	8-9
--------	---------------	----	-----

643 Dallas & Wichita Survey 27 29-30  
NE 1/4 24

NE 1/4 94  
15452 Dallas & Wichita RR Co. 27 36  
E 1/2 of NE 1/4 96

81.97	Dallas & Wichita R.R.G.	27	37
-------	-------------------------	----	----

81-97 Dallas & Wichita RR Co 27 38

163.98 Dallas, <sup>96</sup> Wichita RR Co. 27 39-40

328.91 Dallas <sup>96</sup> Wichita RR Co 27 41-42  
N/A

155.05	Dallas + Wichita RR	27	104-105
--------	---------------------	----	---------

156.62 Dallas + Wichita RR 27 106-107  
SE part

397.30	74	Dallas + Wichita RR	27	108-110
--------	----	---------------------	----	---------

296.60 Dallas + Wichita RR. 27 110-112

29349 Dallas + Wichita R.R. 27 114-115

690.83 Pallas & Wichita RE 27 122-123



No of acres	Name of Grantee No of Survey	Book	Page
26 labor	English <sup>2</sup> Joshua	A	476
	Carver <sup>5</sup> Jesse B.	A	233
1 1/2 labor	Call <sup>1</sup> Otis G.	I	113
1/3 league	Ellison <sup>22</sup> Theophilus	B	184
82 80	Eldridge <sup>8</sup> Thomas	C <sup>108</sup>	84
12 80	Eiselin <sup>11</sup> Seffrin	C	204
28.50	Canes <sup>5 10</sup> Alexander	H	17 70
	Canes Alex		
29 1/2 a.	Evans <sup>106 2</sup> Evan G.	K	49
10 1/4 a.	Evans <sup>48 1</sup> William M.	K	79
10 a.	Erfurt <sup>15</sup> Marius	K	94
20 a.	Evans <sup>1</sup> David	K	164
3 1/2 a.	Evans <sup>5</sup> Thomas S.	K	165
9 1/4 a.	Evans <sup>1</sup> Alexander	K	173
160 a.	Evans <sup>8 12</sup> Alexander	K	177
60 a.	Evans <sup>4 12</sup> Samuel M.	K	244
160 a.	Evans <sup>5 1</sup> S. L.	K	301
160 a.	Elkins <sup>5</sup> J. M.	K	337
160 a.	Evans <sup>5 1</sup> E. D.	K	462 <sup>403</sup>
160 a.	Ewert <sup>2 12</sup> Albert	K	375
	Ewers John		
820	Ethridge <sup>1 1/2</sup> James J.	F <sup>has 1/2 of</sup>	372
820	Etheridge <sup>1 1/2</sup> James J.	F <sup>in Book</sup>	372
	El Paso Irrigation		
	and Manufacturing Comp	H	342-32
540 a	East Texas R.R. Co.	H	190 <sup>5 1/2</sup>
641 a	Eldridge <sup>1 1/2</sup> W. H.	C	173
	Eldridge <sup>1 1/2</sup> W. H.	F	349 14
160 a	Eilers <sup>58</sup> Thomas	G	541 56
723.51	E. T. R. R. Co.	27	92 94

8

12

17

64

32

64

64

32

16

16

16

37

12

11

76

14

79

12

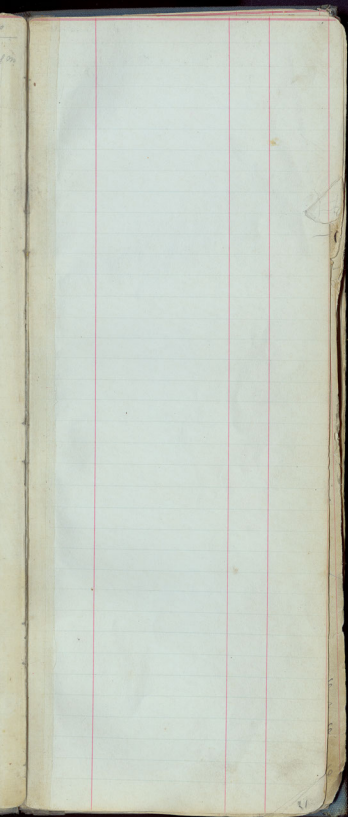
First half Sunday

No. of acres	Name of Grantee No. of Survey	Book	Page
24 a.	Fritz <sup>21</sup> L.	H	80, 78
25 acres	Fawcett <sup>212</sup> Willis	H	68
183 a.	Foster <sup>43</sup> Robert	B	123
320 a.	Farley <sup>4</sup> H. W.	G	337
1559 a.	Forsyth <sup>180</sup> Andrew	A	378
640 a.	Flint <sup>1</sup> Edward	B	177
640 a.	Fowler <sup>42</sup> Styles	C	19
320 a.	Fletcher <sup>69</sup> Robert	G	102
126 a.	Freeman <sup>281</sup> Thomas	H	53
	Freeman <sup>281</sup> Thos. for A. H. Graham	H	174
320 acres	Fessenden <sup>13</sup> Joseph	C	262 206
320 acres	Fowler <sup>4</sup> William H.	B	90
160 acres	Facknle <sup>1</sup> Jacob	K	63
160 acres	Foster <sup>1</sup> David	K	131
160 acres	Felpr <sup>1</sup> Jacob	K	133
160 acres	Felpr <sup>1</sup> Britton	K	139
160 acres	Forbes <sup>1</sup> James	K	147
160 acres	Fram <sup>1</sup> J. M.	K	370
160 a.	Fawcett <sup>420</sup> Willis	L	95
80 acres	Fawcett <sup>428</sup> Willis	L	99
80 a.	Fawcett <sup>501</sup> Willis	I	113
181 3/4 a.	Fontain <sup>408</sup> Edward	F	236
791 a.	Frazier <sup>529</sup> Hugh	I	267
	Ford J. B.		
175 a.	Foster <sup>521</sup> John	K	289
	Freeman <sup>281</sup> Thomas	H	53
33 acres	Freeman <sup>281</sup> Thomas	H	174
one Labo	Fowler <sup>1520</sup> J. W.	A	377
640 <sup>d</sup>	Feeny <sup>21</sup> Martin	H	105
185 a.	Ford <sup>104</sup> R. W.	H	37
120 a.	Foster <sup>31</sup> Robert	G	166, 20
160 acres	Fisher <sup>155</sup> W. D.	K	176
320 acres	Feckenamp <sup>95</sup> Chas. D.	F	410
320	Franklin B. C.	C	156

Received Survey  
obtained from  
Land Office

Station No. Name BE. Dye. Remarks

167 *Scapho. N. W. of A. 1* 5 *east of head on spring*



8

14

17

64

32

64

64

32

$$\begin{array}{r} 210 \\ 167 \\ \hline 45 \end{array}$$

16

16

16

37

12

11

16

14

75

22

No. of acres	Name of Grantee No. of Survey	Book	Page.
	Gainer Orak		
26 labor	Green <sup>1</sup> Michael	A	261
	Menderson, J. P. Piquet		
	Gibson John W.	H	130, 131, 132
	219, 219, 220, 221, 222		309
	133, 134, 205, 206, 207, 208, 209, 213, 214, 215, 216, 217,		
	Graham A. H.	H	33, 34, 774.
	Graham A. H.	H	62, 53
1/4 league	Good <sup>30</sup> James D.	A	579
8 1/2 labor	Goucher <sup>9</sup> Samuel	A	139
	Gray <sup>10</sup> Thomas	A	139
8 1/2 labor	Gilbert <sup>23</sup> Daniel	A	462
1 labor	Gilleland James	A	468
2 1/2 labor	Gates <sup>63</sup> Greenberg	A	338
320 a.	Golden <sup>7</sup> Philip	G	353
8 1/2 labor	Garcia <sup>60 or 46</sup> Francisco	A	319
eight 1/2 a. one third labor	do <sup>364, 375.</sup> No 60.		375
345 1/2 a.	Green <sup>1</sup> John Jr.	A	450
	Gritton G. O. Tiller		
320 a.	Gillespie <sup>63</sup> James, W.	B	139
120 acres	Gray <sup>2</sup> Thomas	C	165
217 1/2 a.	Gray <sup>10</sup> Wm. B.	F	205
8 1/2 labor	Gorham <sup>4</sup> Isaac	A	302
320 acres	Gainer <sup>43</sup> Joseph	K	77, 18
	Grindstaff Henry	K	59
	Glegg Edward	K	64
	Graeton William	K	65
100 a.	Goodenough <sup>58</sup> Thos. H.	K	81
	Gibson <sup>Mrs</sup> Nancy	K	84
	Goforth <sup>1</sup> J. L.	K	87
	Gatlin L. M.	K	88
	Goins <sup>1</sup> Jeremiah	K	89
	Goins Henry	K	107
160 acres	Gregg <sup>603</sup> Jeremiah	K	111
	Gordon Alfred	K	118
	Gatlin A. G.	K	167

No of Acres	Name of Grantee No of Survey	Book	Page
	Glass Theodore	K	170
160	Grigsby <sup>530</sup> Mark	K	194
	Glasscock Joseph	K	<sup>207</sup> 198
	Glasscock Joseph	K	209
160	Gregg Jeremiah <sup>635</sup>	K	250
160	Gleason <sup>304</sup> S. W.	K	304
	Gillman <sup>Corrected P. 418</sup> Harry	K	<sup>475</sup> 418
	Guest William	K	428
	Guest John W.	K	429
	Guest Nat	K	430
330	Gallagher <sup>707</sup> Peter	G	<sup>409</sup> 409
80	Germany <sup>304</sup> R. R.	G	26
160	Germany <sup>305</sup> R. R.	G	25
	Graham <sup>707</sup> R. H.	L	117
80	Gillan <sup>429</sup> D. D.	I	261
80	Gillan <sup>424</sup> Charles O D	I	261
167 <sup>1/2</sup>	Guadalupe <sup>N. 612</sup> College	I	165
143	Gregg Jeremiah <sup>John H. H. 1853</sup>	F	387
32	Glasscock Jane <sup>Williamson co.</sup>		
320	Goucher <sup>5</sup> Samuel	C.	124
640	Gulf Colorado <sup>48 &amp; 49</sup> & Santa Fe R.R.	H	186
640	Gulf Colorado <sup>192 &amp; 170</sup> & Santa Fe	H	336-7
150	Garcia <sup>Mosby &amp; Duran</sup> & others.	H	317
320	Gattis <sup>4</sup> D H	B	173
320	Gulf Colorado <sup>172</sup> & Santa Fe	H	351 &
320	Do. <sup>172</sup> & Santa Fe	H	352
	Garcia G. F. Monty <sup>40 Duran</sup>	H	317
474	Grimes Jesse <sup>Common to Grimes for S. L. Grimes</sup>	I	354 & 5
340 <sup>7/8</sup>	Goodman <sup>96</sup> Lewis	F	411
	Grigsby Marga	K	363
320	Gulf Colorado <sup>Fe</sup> & Santa Fe	H	350
	Heinrich		
110	Griffith <sup>Griffith</sup> Routs	A	3
	Griffith Routs <sup>Griffith Routs</sup>		5



		84	
100 a.	Glaucrook <sup>47</sup> J. S.	C	506
42½ a.	Gracy, D. B.	H.	489
160 a.	Gilchrist <sup>100</sup> Miles	K	268
640 a.	Gordon <sup>18</sup> Edmund	B	86
68.2 100 a H L	Gingo <sup>52</sup> William H.	H	510
155.64 W	Gipson <sup>2</sup> , Mrs. Lucritia	27	43-44
160.0 S	Gipson <sup>2</sup> , Mrs. Lucritia	27	45-46
80.5	Gipson <sup>2</sup> , Mrs. Lucritia	27	47-48
97.37	Gainer, J. W.	27	120
643	Gracy, David C.	27	29-30

251

16

6

29

100

64

N 2

15

2 1/2

8 1/2

W 1/2

8 1/2

N 1/2

16

5

32

N 1/4

15

5 1/2

15

5 1/2

39

5 1/2

29

5 1/2

29

69

No of acres	Name of Grantee No. of Survey	Book	Page	
	Hunt Memucan	D	28 $\frac{1}{2}$	
one labor	Howlett Samuel	A	234	216
	Howlett James	F	435	
8 $\frac{1}{3}$ labors	Hornsby <sup>22</sup> William	A	212	
240 a.	Hamrick John	C	79	
1280 a.	Hawkins <sup>14</sup> Wm J.	C	210	
358 <sup>3572</sup> a.	Harrison <sup>On Walmsley 78</sup> J. C.	A	380	
640 a.	Hunt <sup>45</sup> Memucan	D	42	
1280 acres	Hancock <sup>20</sup> Thomas	C <sup>43, 44, 45</sup>	208	
183 acres	Ham <sup>1</sup> B. L.	F	422	
320 a.	Harrell <sup>42</sup> J. on Willbarger	C	134	
5 $\frac{1}{2}$ labors	Hancock George	A	138	
2382 a. 57 p.	Hawkins <sup>3</sup> Thomas	A	197	
26 labors	Hines <sup>53</sup> William	A	303	
640 a.	Hann <sup>26</sup> John W.	B	185	
640 acres	Harper <sup>42</sup> John	E	72	
320 acres	Hornsby Wm J. W.	C	221	
320 a.	Hornsby <sup>76</sup> Malcom M.	C <sup>220, 221</sup>	219	
320 a.	Hoskitts <sup>4</sup> J. H.	F	263	
one league	Hamilton Samuel	A	209	
	Heissner George	H	13, 14	
	Harrison W. J.	H <sup>15, 32, 25</sup>	18	
160 acres	Hampton <sup>530</sup> J. A.	H <sup>Supl W. Morris</sup>	31	
	Hanse <sup>334</sup> James	H	40, 20	
29.75 acres	Harris <sup>50</sup> J. A.	H <sup>201</sup>	201	
Houston Texas R.R. Co.	H. T. & B. R.R. Co.	H	55-6	
640 a	H. & G. N. R.R. Co.	H	88, 9	
	96, 97, 98, 100, 102, 151, 152, 153:			
	Henderson <sup>R.R. Co. &amp; Overt</sup> & Overt	H	175, 176	
25 labors	333 <sup>35</sup> Hawley Richard	A	585	
	Texas R.R. Co.			
640 a.	Houston East & West	H	140	
	142, 143, 182.			
	Harrison <sup>3</sup> Peter G.	A	259	
1440 a	Herder George	I	370	
12 $\frac{1}{2}$ labors	Hinton <sup>4</sup> J.	A	25	

No of acres	Name of Grantee No of Survey	Book	Page
640 a.	Holton <sup>57</sup> Wm. S.	B	104
1280 a.	Holton <sup>57</sup> Wm. S.	C	149
640 a.	Harrison <sup>57</sup> Elzie	E	10
X 160 a.	Hudson <sup>53</sup> Josiah	K	192
160 a.	Heronymos <sup>8</sup> Wm.	G	407-8
158 a.	Hoffmeister <sup>410</sup> W.	F <sup>469</sup>	229 <sup>8</sup> 230
200 a.	Harrison <sup>474</sup> Wm. J.	F	225
120 a.	Harrison <sup>750</sup> Wm. J.	H	18
160 a.	Harless <sup>8</sup> J. N.	K	385
160 a.	Hammett <sup>53</sup> Miller	K	389
	Holt P. H.	K	396
160 a.	Harris <sup>510</sup> S. L.	K	399
	Holland <sup>Gusamp</sup> Samuel	K	400
160 a.	Harris <sup>28</sup> W. L.	K	435
	Hird J. B.	K	440
	Horton H. C.	K	448
160 a.	Harris <sup>36</sup> J. H.	K	458
	Hamilton Silvest.	K	413
	Hammett J. M.	K	455
	Harris John H.	K	458
160 a.	Hale J. N.	K	457
160 a.	Hicks Alfred B.	K	437
	Hatton L. D.	K	414
	Heffington J. P.	K	357
40 a.	Halmberny <sup>73</sup> C. F.	K	345
80 acres	Hudson W. H.	K	295
	Hudson C. W.	K	294
	Hampton W. R.	K	292
	Heffington W. C.	K	288
	Heffington Stephen	K	281, 282
	Heffington J. P.	K	282, 283
	Harris David	K	274
160 a.	Hartwick <sup>493</sup> Louis	K	266
160	Hamilton Silvest.	K	260
	Holeman Joseph	K	256

Acres	Name of Grantee No of Survey	Book	Page
160 acres	Hyatt <sup>624</sup> J. J.	K	228
160 a.	Hampton Isaac A.	K	217 <sup>216</sup>
	Hyatt J.	K	201
	Hudson Wiley	K	196
	Hudson Josiah	K	192
	Hucabe W. R.	K	169
160 a.	Hülligenmann <sup>587</sup> Heinrich	K	150
160 a.	Hülligenmann <sup>115</sup> Karl	K	149
160 acres	Hicks <sup>112</sup> Harrison	K	140
166 a	Henderson <sup>615</sup> S. B.	K	125
160 a.	Hampton <sup>513</sup> Isaac A. <sup>On cross creek</sup>	K	116
160 a.	Hays <sup>160</sup> F. M.	K	99
160 a.	Harris <sup>516</sup> Frances	K	82
160 a	Harwell James	K	61
160 a.	Holford <sup>526</sup> A. J.	K	57
160 a.	Hylton <sup>513</sup> Frederick	K	54
160 a.	Hamilton <sup>513</sup> Andrew	K	53
320 a.	Hudson <sup>1172</sup> Wiley	K	46
320 acres	Hadley <sup>1160</sup> William R.	K	34
320 acres	Herwig <sup>1112</sup> W.	K	32
320 acres	Harrison <sup>1112</sup> William J.	K	25
320 acres	Harrington <sup>893</sup> John W.	K	12
320 a	Hodges <sup>1112</sup> John S.	K	5
640 a.	Harris <sup>1112</sup> John E.	K	
	Hamilton <sup>893</sup> B. H.	K	
160 a.	Hendricks A. W.	K	476
320 a.	Hunter <sup>1113</sup> Thomas J.	F	182
320 a.	Hall <sup>1112</sup> W. L.	F	270
160 acres	Hobson <sup>526</sup> John	G	383
160 acres	Hobson <sup>526</sup> John	G	384
160 a.	Hunter <sup>34</sup> Mary J.	K	456
160 a.	Hudson Edward	E	193
160 acres	Hudson <sup>615</sup> J. A.	K	306
240 a.	Hearth <sup>1112</sup> Charles L.	G	400
400 a.	Hearth <sup>1112</sup> Charles L. for J. P. Hainley	G	416

No. of acrs	Name of Grantee Reg. of Survey	Book	Page
	Weintzen Charles	Now owned by Beck	
	Hall Henry W.	G	411 & 12
728 a	Harvey <sup>725</sup> Robert	G	430
80 A	Hammett Wash.	G	485
46 D	Hunt, <sup>306</sup> Memucan <sup>Pedernalles R.</sup>	D	173
640	Houston E. <sup>182</sup> N. Tex. R.R. Co.	H	182
216	Ditto <sup>1152</sup>	H	184
320	Ditto <sup>50 &amp; 51</sup>	H	188 & 189
2	25 1/2 lbs. Hanna Benjamin F. <sup>28</sup>	A	515
10 1/3	leagu. Hornsby Moses S.		
6	320 a Hobbs <sup>6</sup> W. M. R.	B	324
N	340 a Hobbs <sup>456</sup> W. M. R. <sup>See same corrected</sup>	F	237 & 8
1 1/2	183 a Ham Berry Lewis <sup>69</sup>	F	393 <sup>422</sup>
8	X Hammett Jackson	H	31
1 1/2	1250 a Hayford S.	H	192 <sup>23</sup>
1 1/2	88 <sup>1721</sup> Hedges Francis M.	B	89
1 1/2	Howlett James		
1 1/2	1160 a Harrell <sup>59</sup> Jacob <sup>at Austin</sup>	A	12
160 a	Hamilton Silvester <sup>55</sup>	K	413
196 a	Higginbotham Henry <sup>334</sup>	F	391 & 392 <sup>260</sup>
1 1/3	leagu. Hensley William	I	334
431 a	Harris C. Hamilton	B	140
	<sup>304, Carl N. 556.</sup> H. E. & W. T. Ry Co.	H	687
1/2	147 1/2 leagu. Hays	A	2, 4, 6, 8, 10
160 P	Hudson C. W. <sup>43</sup>	C	501
160 a	Hutton L. D. <sup>59</sup>	G	508
117 a	Hughes E. S. <sup>85</sup>	"	474
68 1/2 a	Hume J. L. <sup>52</sup>	H	483
	Halcy C. Q.	G	162-166
	" " per State	"	123-124
53 a	Hume J. L. <sup>12 &amp; T F Rowe &amp; H</sup>	H	488
112 1/2 a	" " "	"	487
21 1/2	" " "	"	487
52	Hamilton A.	"	484
63	Hume J. L.	"	483

No of acres	Name of Grantee No of Survey	Book	Page
456 $\frac{1}{2}$ ac	International <sup>56</sup> Great Northern R.R. Co	H	315
	Inman Thomas	K	410
	Inman Frank	K	409
160 acres	Iley W. S.	K	355
	I & G. N. R.R. Co.	H	240, 241,
	<sup>Survey</sup> 242, 243, 296, 297, /		
	I & G. N. R.R. Co.	H	310-11-12
160 a	Beckham John	I	225
$\frac{1}{4}$ league	Irvine Joseph W.	A	8
$\frac{1}{4}$ league	Irvine Joseph S.	A	482.
	Haigwood Henry	F	434
444 a	Harrison <sup>36</sup> W. B.	G	752
275	Hallman E	H	424
<sup>56</sup> R.R. Co 320	" "	"	365
5 $\frac{1}{2}$ acres	Hoffington William	"	517.
	Hopkins L S	K	399
	Hould August	G	482.
360.2	Hayford, Samuel	27	10-11
364.0	Hayford, Samuel	27	34-35
690.83	Hughes, Thos B <sup>Dist R.R. Co Surv #72</sup>	27	122-123
217.75	<sup>Corrected Field Notes C.W.T. H &amp; G. N. R.R. Co #54 A. Co</sup>	27	130
786.45	<sup>Corrected Field Notes Herbert C. Bahlz</sup>	27	148

No. 4

728

80

46

64

21

32

25 lb

$\frac{1}{3}$  league

320

380

183

X

1250

88

1 lb

160

196

$\frac{1}{3}$  league

231

160

160

117

68

53

112

21

63

30





No. 9

72

80

40

64

21

32

25

10  $\frac{1}{3}$  lea

320

340

183

X

1280

88  $\frac{1}{2}$

1160

1160

160

196

$\frac{1}{3}$  lea

231

160

160

160

160

117

68  $\frac{1}{10}$

33

112

21

63

30

70-34

Acres	Name of Grantee No. of Survey	Book	Page
	Jonas Charles <sup>in Balance</sup>	K	76 127
	Jonas Charles <sup>709</sup>	K	127
	Jonas William <sup>on the Rio Blanco</sup>	K	126
	Johnson W. C.	K	200
	Johnson Laura	K	287
	Johnson William	K	227
	Johnson Rebecca M.	K	222 346
	Johnson George	II	335
320 acres	Jorgins <sup>709</sup> Conrad	G	441
160 a.	Johnson <sup>74</sup> R. M.	K	222, 346
640 acres	Jester <sup>150</sup> Thomas	F	143
labor	Jenkins <sup>Wing of</sup> Edward	A	167
71 a.	Jett <sup>1</sup> James	A	584
labor	Jennings <sup>35</sup> Gordon C.	A	285
20 acres	James <sup>60</sup> Martin	K	78
160 a.	Jonas <sup>Her mare</sup>	K	92
160 a.	Jonas <sup>on the Rio Blanco</sup> August	K	73
320 a.	Jackson <sup>5</sup> John	K	23
160 acres	Jolley <sup>5</sup> C. V.	K	377
160 a.	Jolley C. V.	K	466
160 a.	Johanneson <sup>605</sup> J. P.	K	362
130 acres	Jarboe <sup>428</sup> Stephen	G	216
82 a.	Johnson <sup>426</sup> Lucius B.	F	234
320 a.	Jones <sup>7</sup> Joseph	B	72
13 3/4 a.	Johnson <sup>Thos</sup> Freeman	H	174
160 a.	Jolly <sup>70</sup> J. H.	G	516, 517
160 a.	Jolly <sup>70</sup> N. J.	G	518
80 a.	Jackson <sup>70</sup> Hiram	K	298

2

10

6

2

2

1

1

2

1

1

1

1

1

1

1

1

1

1

1

1

1

1

1

1

1

1

1

1

1

1

1

1

1

1

1

1

1

1

1

1

1

1

1

1

1

1

1.1

160

19

1/3

23

1/2

160

160

11

60

58

112

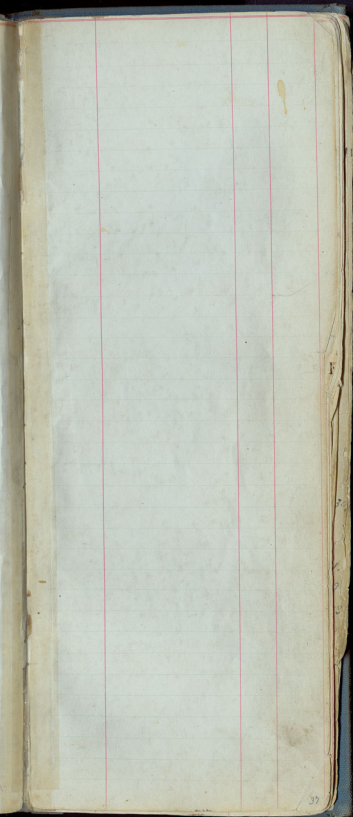
2

5

63

30

36



2

10

6

2

1

2

1

1

8

1

1

1

2

2

1

4

1.1

16

19

1/3

23

1/2

160

160

11

6

58

112

21

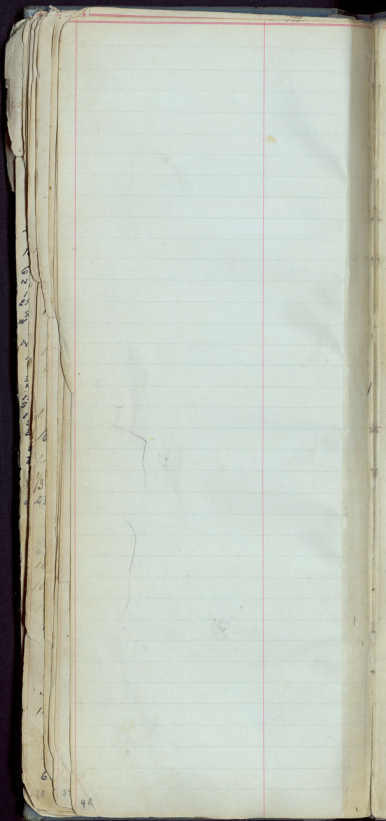
5

63

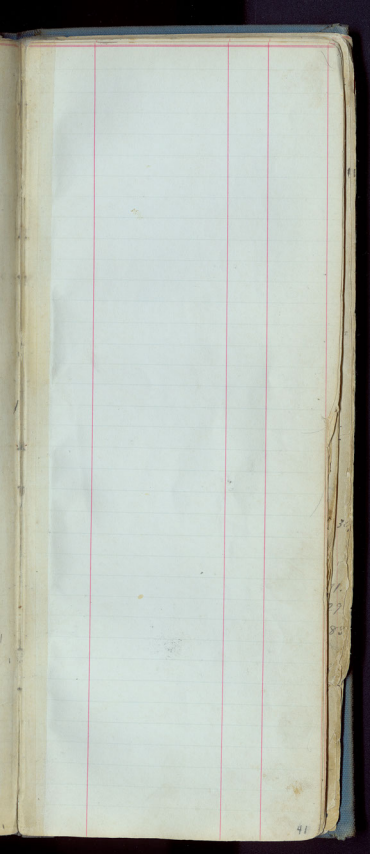
30

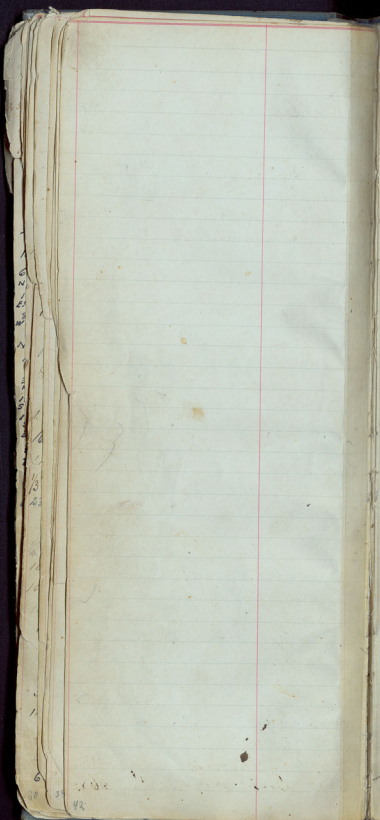
38

No of acres	Name of Grantee No of Survey	Book	Page.
160 acres	King <sup>63</sup> Thomas	K	417
160 acres	Kuhn <sup>40</sup> Joseph	K	314
320 acres	Kirby <sup>51</sup> Josiah	G	361 <sup>200</sup>
119 acres	Kelley <sup>3</sup> Hugh	G	287
320 a.	Koy <sup>13</sup> M. J.	C	129
8 1/3 Labors	Kincheloe <sup>2</sup> August	A	31
948 650 sq. m.	Kincheloe <sup>28</sup> Lewis	A	561
1280 a.	Kemp fam <sup>ts</sup> P.	C	213
640 acres	Kemp fam <sup>ts</sup> P.	E	38
640 acres	Kemp James <sup>12</sup> P.	C	212
one league	Kimbrow <sup>69</sup> Lemuel	A	649
640 a.	Kirkland E.	B	175
107 acres	King <sup>436</sup> W. A.	(L 101-104-102-103) 105-102	
320 acres	Kelley <sup>434</sup> Hugh	G	287
	Kuhn Bernard	K	69
160 a.	Kuhn <sup>715</sup> Andreas	K	70
	Keller Jacob	K	91
	Krauss Johann	K	105
	Kunze F.	K	186
	Kelly J. P.	K	286
160 a.	Kelly J. P.	K	300
160 acres	Kuhn <sup>40</sup> Joseph	K	314
80 a.	Kimbley <sup>2</sup> Robt. F.	K	334
160 acres	King <sup>436</sup> Thomas	K	417
	Kinneman F.	K	391
	Kinnman Rosan <sup>na</sup>	K	425
160 a.	Keller John	K	432
1280 a	Kelsoe <sup>1</sup> James	F	372
107 a	King <sup>436</sup> W. A.	(L 101-102-103) 104-105-112	
	King <sup>434</sup> W. A.		
160 @.	Kirby <sup>510</sup> J.	G.	395
52 1/2 a.	Kellogg M. L.	H	436 & 477









30

31

42

No. of acres	Name of Grantee No. of Survey.	Book	Page.
320 a.	Barremore <sup>57</sup> James	K	10
153 a	Barremore <sup>58</sup> John	K	11
160 a.	Long <sup>59</sup> George	K	104
160 a	Lohn <sup>60</sup> William	K	132
60 acres	Lohn <sup>61</sup> William	K	219
640 a	Lane <sup>62</sup> Cornelius	B	60
581 acres	Linn <sup>63</sup> John E.	G <sup>348</sup>	194
	Livingston <sup>64</sup> Adam E.	I	103
	Livingston <sup>155-158</sup> Adam E.	I	64
16 1/4 labors	Lindsey <sup>65</sup> Isaac	A.	489
26 labors	Lewis <sup>66</sup> William S.	A	260
	Lee Thomas B.	H	320
16 1/4 labors	Lindsey <sup>67</sup> Isaac	A	489
- 960 a	Liesbee <sup>68</sup> John	C	207
6 labors	Little <sup>69</sup> Samuel	A	26
25 labors	Leary Albert M.	A	286
160 a.	Long <sup>70</sup> J. A.	K	254
- 160 a.	Leobert <sup>71</sup> Leucinda	K	270
	Lyon <sup>72</sup> J. T.	K	279
80 acres	Hubett August	K	307
	Linsford G. F.	K	322
160 a.	Leovett <sup>73</sup> W. T.	K	340
	Lohman Gustav	K	393
1320 @.	Labinskic <sup>74</sup> Victor	F	77
480 acres	Lewis <sup>75</sup> John	C	184
320 acres	Little <sup>76</sup> J. C.	G	89
40 acres	Lohn John		
	Lee Thomas B.	H	320
60 acres	Lohn <sup>77</sup> W.	K <sup>152</sup>	219
37 a.	Lee <sup>78</sup> John de.	F	375
160 a.	Long <sup>79</sup> J. A.	K	254
80 acres	LeFebvre <sup>80</sup> Adolphus	G	411
96 1/2 acres	Lowery <sup>81</sup> E. J. W.	G	237
	Lindsey Lewis	A	370 & 71
240 a.	Levett <sup>82</sup> Benjamin	C	368.

<sup>2830</sup> Lee, John C. <sup>2835</sup> Book B, Page 288  
 53 acres, <sup>50</sup> Heritt R. J. H 36  
 " " " " Corrected H. 452  
 " " " " Reconnected H 514

Linsay, Lordy, (See Mrs. Lohy

104.95 Lohmann, Fred	27	78-79
<sup>102.98</sup> <del>104.95</del> Lohmann, Fred	27	80-81
12.51 Lohmann, Mrs. Maude	27	82-83



John Moore #65

C 204. C 159

H. F. Morgan #66.

C 190. C 148

John Moore

No of acres	Name of Grantee No. of Survey	Book	Page
74 acres	Maverick S. A.	H	301
80 acres	Maverick S. A.	H	39 & 59
597 @.	Mirales <sup>50</sup> B. L. Y.	F	262
640 a.	Mayes <sup>50</sup> Garner	F	261
320 acres	Merrill Nelson	D	34
640 a.	Mc Millan <sup>110</sup> Elias	C	113
8 1/3 labors	Mc Coy Green	A	580
8 1/3 labors	Mitchell fam <sup>17</sup> M.	A	460
640 a.	Mays <sup>84</sup> Thomas H.	E	91
one labor	Moore Thomas A.	A	457
640 acres	Martin <sup>2</sup> George	B	176
8 1/3 labors	Mc Dougle <sup>3</sup> John	A	490
26 labors	Martin <sup>45</sup> Henry	A	335
369 a.	Mc Kane <sup>47</sup> Timothy		
26 labors	Munos <sup>55</sup> Lucas	A	576
1/4 League	Manning <sup>57</sup> James H.	A	498
640 acres	Manor James <sup>32</sup>	B	13
1280 a.	Manor James <sup>40</sup>	C	114
1 labor	Mc Cutchen Wm.	A	410
	Moody Mayus.	H	331
	Montgomery R.R. Co.	H	334, 335
160 a.	Morris <sup>53</sup> Joseph W.	H	31
	Morris & Seale	H	144, 145
148, 149, 154, 164, 165.			
	Mapsey J. V.	H	233
234, 235, 236, 237, 238,			
	Mc <sup>e</sup> Stea, Andrew	H	218
	Mallory B. F. & J.	H	91, 95
	Indianola R.R. Co.		
27	Martin Larkin	H	37
	Mc <sup>e</sup> Reid, Frederick	H	34
	Mcra <sup>Carroll &amp; J. J. Saffers</sup> Joseph	A	205
	Moore A. G. Lilled		
	Montgomery James S. Lilled		
640 a. each	Moore <sup>55</sup> Joseph	C	204 159

No of Acres	Name of Grantee No of Survey	Book	Page
1280 a	McAlister J. D.	C	205
1 labor	Moore J. W.		
320 a.	Moore <sup>84</sup> Patterson	C	42
320 a.	Moore <sup>70</sup> Patterson	G	33
	McClure Hugh	D	45
	McCowan W.		
	McKinney Robert	G	368
175 a	Moore <sup>Heirs of</sup> W. P.	G	409, 426
160 a.	Moore <sup>141, 162.</sup> W. P.	G	413
160 a	Moore <sup>155</sup> W. P.	G	397, 391
160 a.	Milam <sup>148</sup> B. B.	K	318
137 1/2	Moore <sup>133</sup> W. P.	G	414
160 a.	Milam <sup>146</sup> Burns	K	182
320 a	Marshall <sup>145</sup> Jos. L.	K	45
originally 738 a.	Moore <sup>133</sup> W. P.	I	264
	Moore Enoch	K	20
	McLaurin Hugh	K	21
	Marshall <sup>145</sup> Jos. L.	K	45
	Medlin Farnett	K	83
	Medlin Harrison	K	85
	Medlin Hall	K	86
	McKibbin J. C.	K	98
	Martin Francis M.	K	102
	Martin J. C.	K	103
	Martin Samuel	K	141
	Morris Joseph	K	146
160 a.	Morgan <sup>153</sup> Saml.	K	151
	Morris Spenser	K	130
	McKinney W. C.	K	158
	McCormick Jno W.	K	161, 162, 163
	Medlin Marion	K	172
	Milum Burris	K	182
	McCowan Wm.	K	211
	McCowan F. M.	K	215
	Watson Peter	K	223
160 a.	Mays <sup>141</sup> J. W.	K	226

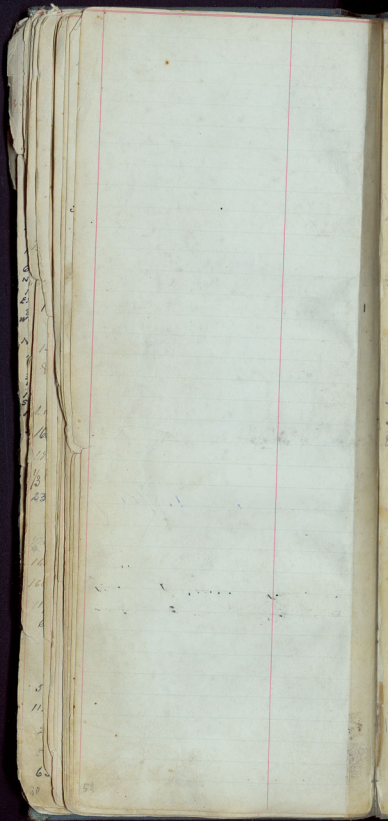


No of Acres	Name of Proprietor No of Survey	Book	Page
	Maxey <sup>2</sup> Walter	K	285
	Maxey <sup>2</sup> James	K	285
	Mc Cowen <sup>2</sup> W <sup>th</sup> connected	K	290
	" F. M.	K	297
	Milam B. B.	K	318
160 a.	Maxey <sup>2</sup> J. M.	K	306
160 a.	Mann <sup>2</sup> C. M.	K	336
	Maxey <sup>2</sup> W. M.	K	344 366
150 a.	Merck <sup>2</sup> S. K.	K	358
	Milam J. B.	K	357
	Mayard <sup>2</sup> G. W.	K	412
	Murray B. L.	K	422
	Moss John L.	K	368
160 a.	Maxey <sup>2</sup> Robert	K	395
	Milam Joseph	K	372
	Maxey <sup>2</sup> W.	K	456
	Milam B. B.	K	354
40 <sup>3</sup> 640 a.	Moat <sup>2</sup> John <sup>Heirs of</sup>	G	388, 389
	Moat <sup>2</sup> John <sup>Heirs of</sup> on Pedestal	I	259 & 26
640 a.	Miller James <sup>487</sup> M.	G	197
640 a.	Miller James <sup>491</sup> M.	G	198
	Miller Joe M. Heirs of	I	109, 110
40 a. more	Moat <sup>2</sup> John	G	388
	McEntire <sup>21</sup> William	F	406
640 a.	Mims B. C.	C	265
640 a.	McKinney <sup>520</sup> Robert <sup>Heirs of</sup>	G	368
160 a.	Mc Cowen <sup>2</sup> William	K	290
	Mc Cowen <sup>2</sup> F. M.	K	297
160 a.	Marr <sup>522</sup> Achilles	G	380-1
160 a.	Marr <sup>523</sup> Achilles	G	381
209 a.	Mansola <sup>2</sup> J. B.	F	374
160 a.	Mansola <sup>2</sup> J. B.	F	373
56 <sup>3</sup> / <sub>4</sub> a.	Miller <sup>2</sup> J. A.	F	378
320	Merriam <sup>14</sup> Eli Todd	B	70
	McKinney & William	I	403
	Copy in Book I page 403		

No of Acres.	Name of Grantee No of Survey.	Book	Page
100 a.	Moore <sup>85</sup> Wm. P.	G	452
640	Moore <sup>20</sup> Robert B.	F	375, 266 174
	Maverick S. A.	H	37
145 a.	Moore <sup>416</sup> John L.	K	363
1022 d.	Minor <sup>416</sup> Drury H.	I	105
150 a.	Montes & others	H	37
320 a.	Moore <sup>70</sup> James	F	433
320 a.	McKinney <sup>175</sup> & Williams	H	345
77 a.	McClure <sup>63</sup> Hugh	H	426
37 1/4 a.	McKinney <sup>N. 601</sup> & Williams	I	403
280 a.	McKinney <sup>N. 601</sup> & Williams	I	403
	Moodey <sup>N. 168</sup> , Ayers <sup>S. N. 169</sup>	H	357, 358
160	Morgan, John R.	G	503
	Morel Box, J W, Moddax, F. M, & Anderson E. L.	H	467
160 a.	Mitchell A	G	499
80 a.	McClish <sup>175</sup> & M.	"	492
169 a.	McDonald <sup>289</sup> John	H	76
	McLean E. R.	H	480, 475 485, 478, 47
52 a.	Hamilton A	H	484
	E R McLean	H	480
	McLean E. R.	H	481
2160 a.	Maxcy J W.	H	487
530 a.	Maxcy J W.	H	488
140 a.	Moore <sup>74</sup> Shos A	A	457
	Moore Nathaniel	"	577
169 a.	McDonald, Burt	H	76
	Manard G W	K	412
	Monron Martha G	A	473
160 a.	McLaughlin V. H.	"A"	479
640	Mc Coy <sup>2</sup> Martha	H	503-4
	Murray B L	K	422
160	Moore <sup>550</sup> S. M.	G	527

Madden Lucinda H. 408

1043	Maxey <sup>344</sup> , A. M.	27	54
114.5	Maxey <sup>344</sup> , A. M.	27	55
123.3	Maxey <sup>344</sup> , A. M.	27	56-57
578.4	Moore, Robt. B.	27	124- <del>125</del>
539.8	Moore, Robt. B.	27	125



1/2  
1/3  
23  
1/2  
1/3  
16  
16  
11  
6  
5  
11  
2  
5  
6  
30

No. of acres	Name of Grantee No. of Survey	Book	Page.
	Nobles J. W.	K	26
	Nennery Caleb	K	145
	Nelson Thomas	K	356
	Newman D. P.	K	431
	Newman S. R.	K	373
1 labor	Anderson <sup>30</sup> Thomas	See	Letter A
	Nall W.		
320 a.	Nicholson <sup>3</sup> James	B	59
738 a.	Nelson <sup>41</sup> A. M.	<del>H</del>	254 Corrected 258
	Nepgin <sup>50</sup> Antone	K	109
	Newman <sup>58</sup> R. S.	K	373
	Newman <sup>24</sup> D. P.	K	431
160 a.	Nelson <sup>62</sup> Thomas	K	336-416 Corrected.
	Kunez <sup>52</sup> Guillermo	I	127
320 a.	Nowland <sup>26</sup> John	B	37
320 a.	Neeley <sup>30</sup> James H.	C	214
8 1/2 labor	Neil George W.	A	238
	Kunez Guillermo	II	127
320 a.	Nicholson <sup>3</sup> James	B	59
many	Nichols A. W.	11	468
135 a	Nichols A. W.	"	469-470
747 a	" " "	"	471-472
160 a.	Newman P. J.	G	533
284.32	Nobles, Mrs. N. M.	27	20-22
160.0	Nobles, Mrs. N. M.	27	24-26
124.32	Noble, Mrs. N. M.	27	27-28

1  
2  
3  
4  
5  
6  
7  
8  
9  
10  
11  
12  
13  
14  
15  
16  
17  
18  
19  
20  
21  
22  
23  
24  
25  
26  
27  
28  
29  
30  
31  
32  
33  
34  
35  
36  
37  
38  
39  
40  
41  
42  
43  
44  
45  
46  
47  
48  
49  
50  
51  
52  
53  
54  
55  
56  
57  
58  
59  
60  
61  
62  
63  
64  
65  
66  
67  
68  
69  
70  
71  
72  
73  
74  
75  
76  
77  
78  
79  
80  
81  
82  
83  
84  
85  
86  
87  
88  
89  
90  
91  
92  
93  
94  
95  
96  
97  
98  
99  
100

5

11

2

5

6

30

52

59

*[Faint, illegible handwriting in the upper right section of the page.]*

( 30  
71.  
22  
88

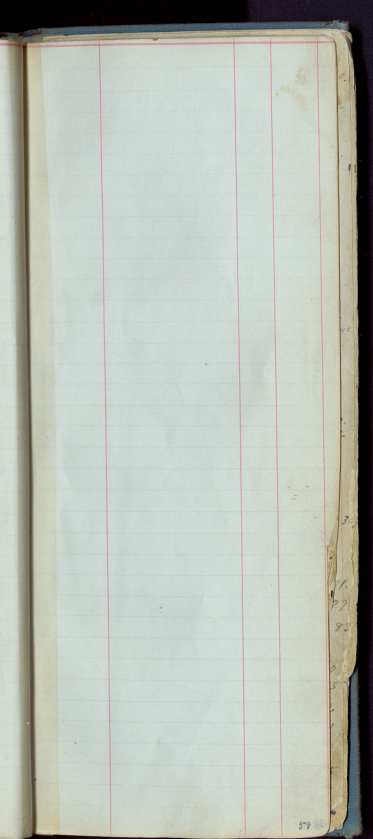




320 acres	O'Brien <sup>31</sup> Owen	B	187
160 acres	Oliver <sup>44</sup> J. W.	K	451
160 a.	Oats <sup>90</sup> Wm.	K	452

160 a	Owens <sup>71</sup> Chas W.	A	490
-------	-----------------------------	---	-----







No of acres	Name of Grantee No of Survey	Book	Page
640 acres	Philips <sup>8</sup> Henry S.	B	61
26 labors	Payne <sup>6</sup> John C.	A	535
160 acres	Paschal <sup>40</sup> M. P.	K	341
320 acres	Pridgen <sup>3</sup> H. M.	F	421 <sup>424</sup>
937 acres	Patten <sup>581</sup> Alexander C. <small>Heirs of</small>	<sup>273 pages</sup> <del>E</del> I, <sup>272</sup>	274
	Patten W. P.	K	378
640 acres	Perkins <sup>38</sup> Isaac	G	187
640 acres	Perkins <sup>37</sup> Isaac	G	186
320 a.	Poitevent <sup>3</sup> J.	H	<sup>75</sup> 72, 73, 74
	Pecht Fred. C.	H	202 <sup>also</sup>
320 a.	Parrish <sup>2</sup> C. S.	B	171
320 a	Paschal <sup>586</sup> J. A. <sup>T</sup>	D	179
640 a	Priestly <sup>505</sup> James <sup>Toby</sup>	D	181
640 a.	Preece <sup>23</sup> Wm M.	F	408
160 a.	Preece <sup>288</sup> R. L.	H	69
160 a.	Payne <sup>287</sup> <sup>on hand Bull Creek</sup> <del>Banyan</del>	I	69
	Porter William	A	24
160 acres	Pearson <sup>519</sup> J. H.	K	<sup>379</sup> 437, 48
160 a.	Parris <sup>521</sup> R. G.	K	143
	Penland A. F.	K	323
160 acres	Pierson <sup>57</sup> Samuel	K	148
	Pierson James	K	183
	Pierson J. H. <sup>100</sup>	K	210
	Pierson Isaac. H.	K	235
	Pierson J. H.	K	390
160 acres	Pierson <sup>57</sup> Joseph	K	371
640	Peace <sup>480</sup> Henry	Q	180
160 acres	Preece <sup>48</sup> Richard L.	K	755
160 a.	Payne <sup>On 5th water of Egypt</sup> <del>Banyan</del>	K	198
160 a	Peel <sup>57</sup> D. C.	K	221
160 a	Phelan <sup>52</sup> Ewan	K	224
	Phelan Jesse	K	278
	Phelan A	K	286
	Penland W. C.	K	297
	Penland A. F.	K	323

No of Acres	Name of Grantee No of Survey	Book	Page
	Palmer John	K	350
160 a	Perry <sup>634</sup> W. R.	K	352
	Pogue <sup>Superior</sup> James	K	358
	Penland J. G.	K	369
	Palvado Jno. A.	K	402
160 a.	Prewett <sup>514</sup> Hannah	K	426
160 a.	Puryear <sup>648</sup> James M.	K	427
160 a.	Patton <sup>523</sup> W. F.	K	378
160 a	Puryear <sup>3</sup> James M.	K	441
	Perkins John F.	K	361
	Payne <sup>6</sup> John C.	A	535
97 acy	Parker <sup>10</sup> Charles	G	403
180 a.	Parker <sup>705</sup> Charles	G	440
43 a.	Parker <sup>80</sup> Charles	G	447
320 a	Parker <sup>400</sup> Christopher	G	393
120 a	Pecht <sup>10</sup> Fred. C.	H	35, 36
160 a.	Pecht <sup>512</sup> Fred. C.	H	302
	Patrick <sup>532</sup> G. W.	H	332
160 a.	Puryear <sup>30</sup> W. L.		
160 a	Payne <sup>187</sup> Banyan <sup>on Bull</sup>	H	69
	Patrick <sup>529</sup> George M.	I	329, 330, 331
	Patrick <sup>530</sup> George M.	I	332, 333
50 a.	Pivittae <sup>5</sup> Michael	G.	392
160 a.	Pivittae Michael	G	365
320	Philips <sup>19</sup> Cornelius	B,	121
320 a	Philips Abner E	B,	122
143 a	Power <sup>11</sup> Charles	F	387
641 a	William <sup>Rept</sup> Treest	F	412
188 a.	Payne, W. D.	H.	396
628 a d.		H.	397
143	Puryear <sup>72</sup> W. R.	H.	435
640	Pagor <sup>85</sup> J. R.	G	434
528 7/8 2 1/2	Patton <sup>501</sup> Alex E	I	274
40 1/2	Pat <sup>5</sup> J. M.	H	499
160	Pogue <sup>601</sup> Jas	K	358
160 62	Park <sup>1</sup> John	G	523

1280 Pal K John L H 355  
205

144.31 Payne, W.D. 27 86-87





50.

42

9.  
2

3.

71.

27

83

8

5

2

1

1

1

1

1

1

1

65



50.

42

9.  
2

30

71.

29

83



No of copy	Name of Grantee No of Survey	Book	Page	
291 a copy	Raley <sup>3</sup> Abuton	K	3	30
320 a copy	Richardson <sup>3</sup> G. W.	K	15	
160 a	Rauntree <sup>11</sup> Henry C.	K	27	
160 a	Rauntree <sup>11</sup> Thomas P.	K	28	
160 a.	Russell <sup>11</sup> J. P.	K	51	
160 a.	Wright <sup>11</sup> John <sup>11</sup> Right	K	71	
160 a.	Rischtee <sup>11</sup> Hunnrich	K	157	
160 a.	Roberts <sup>11</sup> James M.	K	188 & 203	
160 a.	Rawles <sup>11</sup> Calvin	K	198	
160 a.	Richardson <sup>11</sup> Alex.	K	312	
	Robinson <sup>11</sup> T. J.	G.	28	
	Robinson <sup>11</sup> T. J.			
	Robinson <sup>11</sup> T. J.			
640 a.	Byrnearson <sup>11</sup> James	C C	233 179	
640 a copy	Rodriguez <sup>11</sup> Antonio	I	135	
640 a copy	Rosier <sup>11</sup> John P.	B	107	
320 a	Rayhouse <sup>11</sup> Wm.	BB	237 78	
3 League	Royall <sup>11</sup> W. B.	H	57	9. 2
5304 1/2 a	Roger <sup>11</sup> James	A	263	
25 labrs	Rodriguez <sup>11</sup> Pedro	A	488	
1280 a.	Rice <sup>11</sup> James O.	C	235	
1324 1/4 a.	Rogers <sup>11</sup> James	A	265	
	Rodriguez <sup>11</sup> Hertrudiz	I	128	
641 a.	Rusk Transport. Co	H	103, 104	
	105, 106, 120, 122, 123, 141, 142, 255, 258, 266, 267, 268, 269			27
160 a.	Rawles <sup>11</sup> Calvin	K	198	83
160 a.	Boy <sup>11</sup> F. L.	K	204	
160 a copy	Roberts <sup>11</sup> Joseph	K	225	8
160 a.	Reinke <sup>11</sup> C. P.	K	299	3
160 a.	Richardson <sup>11</sup> Alex	K	312	2
160 a.	Royzell <sup>11</sup> P. M.	K	309	1
80 a.	Rohmiller <sup>11</sup> Joseph	K	316	
	Ried Merinda	K	329	5
	Rumley Robt F.	K	334	

No of Acres	Name of Grant No of Survey	Book	Page
	Roberts A. W.	K	423
160 acres	Rynes <sup>546</sup> C	K	411
160 @	Rey <sup>506</sup> Sarah	K	381
160 acres	Rutledge Thomas S.	K	450
	Rodriguez <sup>426</sup> <sup>Barton creek</sup> uana		
160 a	Reynolds Joseph	F	399-40
490 a	Reynolds <sup>441</sup> Joseph	F	404
160 a	Roberts <sup>51</sup> James M.	K	203
1281 a	Raper <sup>57</sup> Marcus D.	C	163
640 a	Raper <sup>60</sup> Marcus D.	B	100
100 a	Rudge <sup>49</sup> Frederick	G	387
180 a	Rutledge <sup>403</sup> W. P.	F	376
160 a	Robertson <sup>439</sup> <sup>445</sup> Sterling C.	G	87, 88
one lot	Rowan <sup>21</sup> H.	A	361
483 a	Riddle <sup>119</sup> Chas. H.	C	786
640 a	Rogers C. C. Mrs.	F	412
160 a	Rout <sup>72</sup> Robert	C	509
53 a	Rowe J. F. & CW & J. L. Hume	H	1188
5 1/4	4		
134.41	Ringstaff Mrs. M. E.	27	49-50
5.12	<sup>2222</sup> Reimers, Edith	27	74-75
1.50	<sup>2222</sup> Reimers, Edith	27	76-77
132.22	Ringstaff, M. A.	27	60-61
93.19	Rehmuller, Joseph No 642	27	170-171

No. of acres	Name of Grantee No. of Survey	Book	Page.
	Southern Pacific RR. Co. H	27, 28, 29, 30.	
6 <sup>40</sup> a. <sup>on the</sup>	Sprecher <sup>And</sup> <sup>Patman</sup> H	20	
218 <sup>70</sup> a.	Sprecher A <sup>11-12-13-14-15-16-17-18-19-20-21-22-23-24-25-26-27-28-29-30-31-32-33-34-35-36-37-38-39-40-41-42-43-44-45-46-47-48-49-50-51-52-53-54-55-56-57-58-59-60-61-62-63-64-65-66-67-68-69-70-71-72-73-74-75-76-77-78-79-80-81-82-83-84-85-86-87-88-89-90-91-92-93-94-95-96-97-98-99-100</sup>	B	176
320 acres	Spear <sup>100</sup> G. W.	B	195
320 a.	Secrest F. G.	C	294
320 a.	Scott <sup>27</sup> Joseph	B	36
8 <sup>10</sup> a. <sup>1475 a.</sup>	Stuart Thomas G.	A	449
one labor	Standiford Elizabeth		
320 acres	Standiford William	C	246 187
1280 a.	Sanders <sup>51</sup> Robert L.	C	9677
320 acres	Smith <sup>22</sup> M. W.	C	78
640 acres	Smith <sup>24</sup> Thomas	C	311
437 <sup>353</sup> a.	Sharp <sup>10</sup> Thomas	C	300 <sup>242</sup>
640 a. <sup>County</sup>	Standiford <sup>62</sup> William	B	158
25 labor	Spear G. W.	A	235
320 acres	Silsbe Albert	C	188
57 acres	Childers <sup>61</sup> B. F.	G	404
62 <sup>70</sup> a.	Strothers <sup>110</sup> C. F.	F	414, 415, 419. 381, 382
26 labor	Sanders <sup>59</sup> William H.	A	581
	Silsbe Albert, heir of		
640 acres	Swearinger <sup>320</sup> V. N. E		68
	Southern Pacific RR. Co. H	27, 28, 29, 30.	
170, 171, 272	Sulph. RR. Co.		
	San Antonio & Mexican	H	77
	Seale, Morris & Seale	H	70, 71.
	Sunegas Agricult	H	273, 274
320 acres	<sup>1730</sup> Sulphur Fork Iron <sup>Co</sup>	H	38, 58, 88
	Stuart James Tillis		
1380 a.	Stevens <sup>100</sup> Corbet	C	158
320 acres	Standiford Jacob	G	473
320 acres	Sundberg <sup>77</sup> Aaron P.	F	82
838 acres	Swisch John	F	371
	Sparks William		
640 a.	Sergeant <sup>100</sup> W.	G	205
320 a.	Spillman James	C	23 29.

No. of Acres	Name of Grantee No. of Survey	Book	Page
640 <sup>a</sup>	Swain Wm <sup>910</sup>	G	360
320 <sup>a</sup>	Sholl John Daniel	B	42
240 <sup>a</sup>	Smith John T. <sup>154</sup>	G	111
	Southern Pacific R R Co	H	27, 28, 29, 30
120 <sup>a</sup>	Stuttle Melinda	K	424
	Simpson L. W.	K	394
320 <sup>a</sup>	Spaulding <sup>485</sup> William	D	1898 90
	Sansom John W.	K	6
	Stauders George W.	K	8
320 <sup>a</sup>	Smith Jesse T.	K	19
	Stattler Henry	K	48
	Smith J. S.	K	55
	Suche Moritz	K	68
	Schmidt Christian	K	95
160 <sup>a</sup>	Schnoutz <sup>101</sup> William	K	110
	Sorow m. m.	K	124
160 <sup>a</sup>	Stewart <sup>300 on p. 600</sup> Joseph G.	K <sup>crack</sup>	122
160 <sup>a</sup>	Stewart <sup>my</sup> Benj. K.	K	121
	Thackelford James, C.	K	214
	Silvester James	K	233
	Stewart Jesse <sup>Corrected</sup>	K	277
160 <sup>a</sup>	Stewart <sup>Joseph K</sup> Joseph <sup>my</sup> A.	N. K <sup>15 with above</sup>	278
160 <sup>a</sup>	Strahle And	K	296
	Smithart M. A.	K	171
160 <sup>a</sup>	Sylvester <sup>72</sup> James	K	303
160 <sup>a</sup>	Sauguenette <sup>697</sup> H. P.	K	321
	Schmidt F.	K	291
160 <sup>a</sup>	Strickland Jf.	K	324
	Simpson V. C.	K	326
	Simpson J. M.	K	330
160 <sup>a</sup>	Seyffert <sup>697</sup> Frederic	K	331
	Smith A. F.	K	392
	Simpson L. W.	K	394
	Schmall John	K	397
	Stuttle Melinda	K	424



No. of acres	Name of Grantee No. of Survey	Book	Page
160 acres	Simpson <sup>12</sup> W. H.	K	379
160 acres	Smith <sup>13</sup> J. S. B.	K	382
	Sylvester James	K	443
160 a.	Stroud P. J.	K	444
160 a.	Sylvester <sup>14</sup> Thomp.	K	305
160 a.	Sundery <sup>15</sup> Halman	K	447
20 a.	Storzing <sup>16</sup> Charles	K	453
	Schmall John	K	457
	Scott G. W.	K	466
160 a.	Sylvester <sup>17</sup> C. H.	K	473
640 @ 100	Seeholzer Fedele	B	148
	Salinas Maria Catala		
114 acres	Smith <sup>18</sup> W. B. D.	I	323
one labor	Swisher <sup>19</sup> James G.	I	59
160 a	Strahle <sup>20</sup> Andrew	K	296
185 acres	St John <sup>21</sup> Edmund <sup>See Collins, Jan 21</sup>	G	437
135 a	St John <sup>22</sup> Edmund <sup>See Collins, Jan 21</sup>	G	436
260 a	Nichols <sup>23</sup> Fidle	C	285
160 acres	Stephens <sup>24</sup> Wm.	K	274
	San Antonio, Gulf Mexican		
	Rail Road Company	H	77
63 acres	Strickland <sup>25</sup>	I	358
27 1/2 a	Sanchez <sup>26</sup> Jose Ignacia	I	170
110 a	Schlatter <sup>27</sup> John	F	315
	Simpson <sup>28</sup> W. H. <sup>right to Milam County</sup>		
640 a.	Spanner <sup>29</sup> John M.	B	73
320 acres	Sigler <sup>30</sup> William	G	428
160 a	Sharpless <sup>31</sup> Joshua B.	F	428
	Schroeder <sup>32</sup> John	I	362
320 acres	Susord <sup>33</sup> Henry	B	128
25 labor	Smith <sup>34</sup> Philip A.	A	554
63 1/2 a	Smith <sup>35</sup> Wilby B. D.	I	324
228 1/2 a	Scott <sup>36</sup> Sam. T.	F	47432
87 1/4 acres	Scratchfield <sup>37</sup> Polly	I	123
200 a	Stewart John	G	181
one labor	Simpson, Dinmore	A	386

Name	No. of Survey	Book	Page
160 Sylvester James <sup>36</sup> <small>Situated on Cherry Hotted</small>		K	443
68 Strother C. J. <sup>60</sup> <small>on Bayview</small>		F	377
199 Stroh Philip <sup>80</sup>		I	239
62 Strother C. J. <sup>610</sup> <small>North end of St. Gilbert's</small>		F	381 & 382
225 Simpson L. W. <sup>610</sup> <small>certificate to John Conroy</small>		F	426
Swisher James G.		G	225
3 Swisher Jno. M. <sup>on head of Bull</sup> <small>scrip.</small>		D	46
292 San Antonio & Mex. Gulf <sup>11 1/2</sup> <small>head of Bull situated on North of Livingston</small>		D	228
Sinegas Irrigation Co. <sup>11 1/2</sup>		H	293-4
Swisha J M.		S	507

154 Pullman Jas. C.	A	1	44810
170 Swaim Thomas C.	A	3	44810
180 Swaim Thomas	A	5	44810

15372 Scrivener Sewer Charles P.	H	1491
23 " 5 " " "	"	492
68 " 6 " " "	"	493
68 " 7 " " "	"	494
640 Smith William	B	81
Stewart John	C	32, 181, 182
640 Shannon John Mc	B	73
Shaffer L	H	421
" A & L	"	432
Spence Joseph <sup>65</sup>	H	428
124 Spear A B	A	436
160 Little Chas. C.	K	244

84.37 Strother, C. J. <sup>4</sup>	27	6-7
1450 Southern Pacific R.R. Co. <sup>SW 1/4</sup>	27	58-59
13722 Southern Pacific R.R. Co. <sup>610</sup>	27	60-61
63.16 Strother C. J. <sup>5 1/2</sup>	27	66-67
403.26 Seale, Morris, & Seale <sup>62</sup>	27	72-73
29.0 Shelton, Johnnie	27	99-100
289.32 Schulte-Tom W. & R. C.	27	20-22
613.61 E. part Seale <sup>MORTIS</sup> & Seale #52	27	127-128



1860  
1861

1862

1863

1864

1865

1866

1867

437

320  
268

52

6

60

56

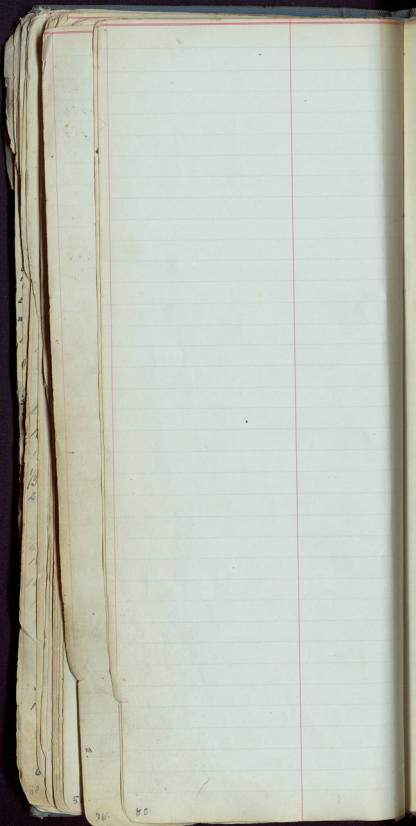
76

No of acres	Name of Grantee No of Survey	Book	Page
320 acres	Trainer <sup>22</sup> W. N.	K	174
29 1/2 acres	Turner <sup>17</sup> Pleasant	K	35
160 acres	Thurman H. G.	K	446
160 acres	Thurman H. G.	K	184
320 acres	Tydings <sup>3</sup> Charles	C	<del>124</del> 154
	Tribble James M.	I	111
640 acres	Tulga <sup>23</sup> A. M. A.	B	102
640 acres	Thomas David	B	257
1/3 league	Trammel <sup>3</sup> Burk	A	455
1/3 league	Tramell <sup>4</sup> James	A	253
69 acres <sup>22</sup> <sub>Branch</sub>	Toby <sup>321</sup> Thomas	H	66, 67, 68, 76
242 acres	Thomas John J.	K	36
	I. & N. R. R. Co.	H	310-11-12
640 a for Prob	Tyler <sup>209</sup> Tap <sup>4</sup> R. R. Co.	H	307-8
240 a.	Tweed <sup>31</sup> James	C	328-329 80
640 a Basin	Tyler Tap <sup>27</sup> R. R. Co.	H	120, 121
321, 322, 323, 324, 328, 329, 330, 331, 332	Texas & New Orleans <sup>R.R. Co.</sup>	H	75 to 110
160 acres	Tabor <sup>2</sup> Rupert	K	117
160 acres	Townsend M. W.	K	176
160 acres	Thomas <sup>523</sup> Marcus	K	180
160 a.	Tungate <sup>522</sup> Nancy	K	384
80 acres.	Tungate <sup>27</sup> Ephraim	K	434
160 acres	Tombaugh <sup>25</sup> Peter	K	442
	Thompson C. Q.	K	459
	Truitt <sup>2</sup> Wm. M.	K	470
320 a <sup>*</sup>	Tyler <sup>169</sup> Tap <sup>40</sup> R. R. Co.	H.	328, 329
367 acres	Trautwine <sup>52</sup> Adolph	H.	38
640 acres	Texas <sup>202</sup> Mexican <sup>83</sup>	H.	394
	& Quincy, J. L.	L	395
	Texas Central Ry. Co.	H	353
	54, 65, 66, 68, 69, 70, 71, 72, 73, 74, 75, 76, 77, 79, 80, 81, 82, 365		
160	Todd John T.	G.	509, 510
	Texas Central Ry.	H.	173, 380
84 1/2 a	Turner <sup>9</sup> George	H	381
2	Texas Central Ry Co	"	498
2 68 1/2 a		"	382
		"	473
		"	470

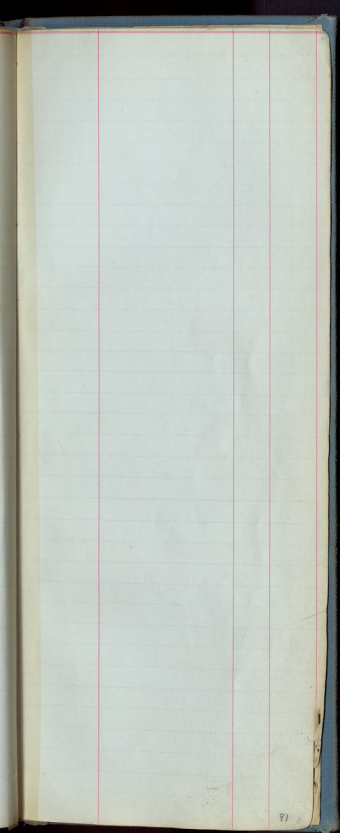
Tex Central R.R.		H 368
Sumner St. George W.		H 511 & 512
Downs L. S.		" 529
Tex. Central R.R.	186 A 186 B 186 C	27 13-14-15-16-17
673.44 T.C. R.R. Co.	194	27 90-91
5 1/2 of N 1/4 & SW 1/4	40	27 116-117
330 Tyler Tap R.R.		27 119
SW part of N 1/4	40	
43.2 Tyler Tap R.R.		27 1-3
151.9 Tausch, Norman F.		

5-16-77

7

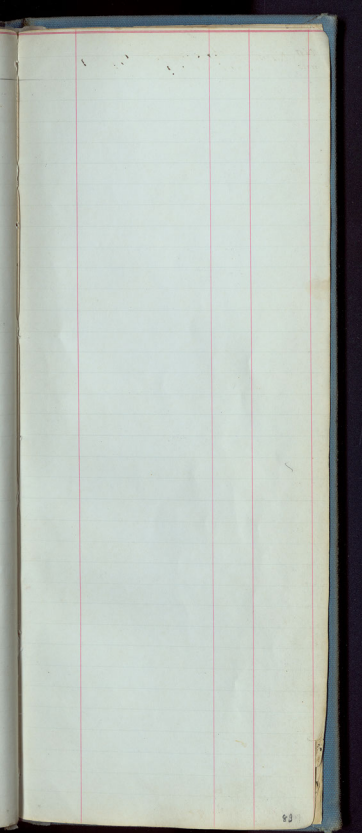


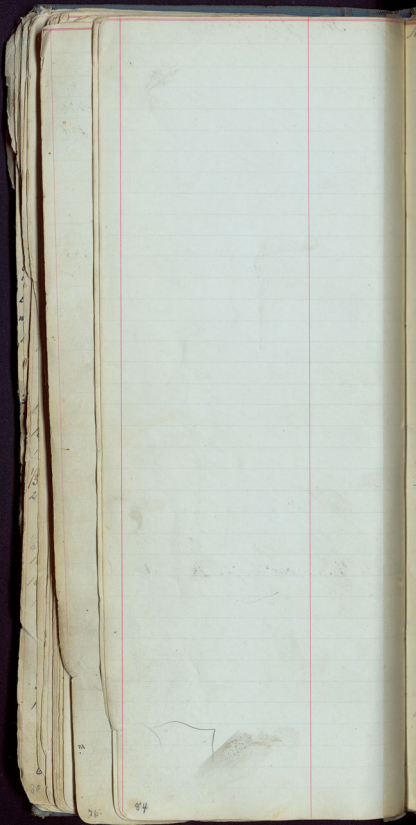




No acres	Name of Grantee & No. of Survey	Book	Page
-------------	------------------------------------	------	------

160	Us		
-----	----	--	--





No of acres	Name of Grantee No of Survey	Book	Page
-------------	---------------------------------	------	------

1239 a.	Van Winkle <sup>14</sup> John	G	257
---------	-------------------------------	---	-----

26 labors	Vickers Harris	A	309
-----------	----------------	---	-----

100 acres	Viles & Co	K	463
-----------	------------	---	-----

528 a.	Varcinas <sup>cydad</sup> Irini	I	268
--------	---------------------------------	---	-----

640 a	Vanwinkle <sup>10</sup> John	G	100
-------	------------------------------	---	-----

8 1/2 labors	Vandaver Logan	A	210
--------------	----------------	---	-----

	Vaughn, Agricul	H	299
--	-----------------	---	-----

	tural, Mechanical &		300
--	---------------------	--	-----

	Land Company		
--	--------------	--	--

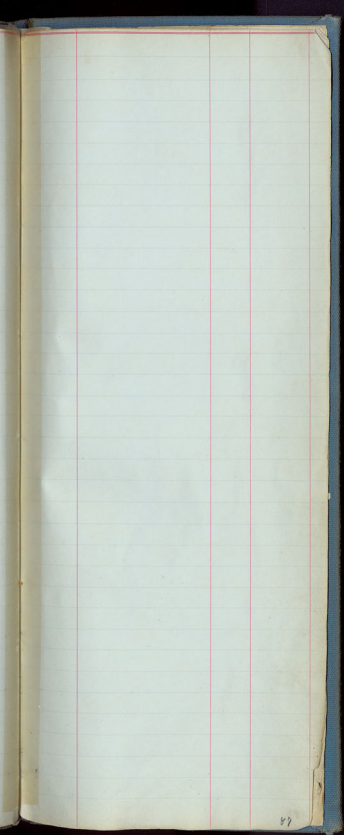
	Washington <sup>R.R. Co.</sup> County	H	60, 61
--	---------------------------------------	---	--------

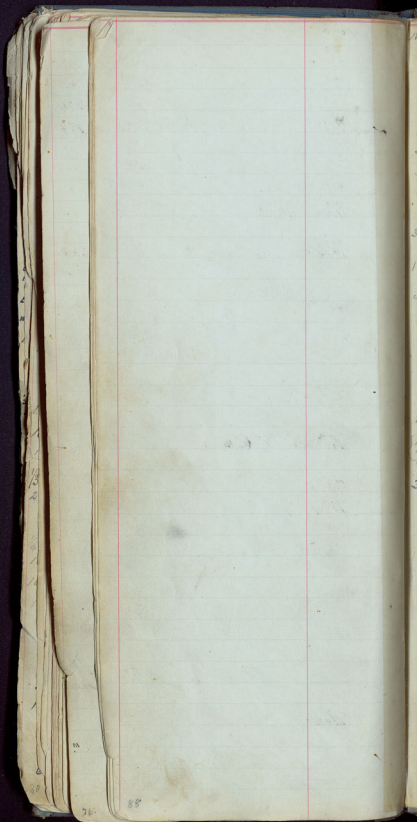
	Williams Evan	H	64, 65
--	---------------	---	--------

	Wightman Benj	H	295
--	---------------	---	-----

one labor	Wightman <sup>55</sup> Benj	I	363. 37
-----------	-----------------------------	---	---------









No of acres	Name of grantee No of Survey	Book	Page.
160 a	Wade Enslly G	K	220
	Wade Orren	K	153
	Wood C. G.	K	144
160 a	Wallis <sup>61</sup> Robert G.	K	420
320 a	Whitehead <sup>43</sup> Henry S.	F	133
320 a	Wafford <sup>Heirs of</sup> William	F	193
320 a	Wafford <sup>Heirs of</sup> William	F	194
	Wade J. S.		
320 a	Wallace <sup>67</sup> Wm S.	B	126
	Williams <sup>62</sup> Jesse	A	467
	Wiche P. J.	I	292
3377 a	Westbrook Tho B.	A	258
8 1/2 lots	Wallace <sup>18</sup> James P.	A	264
26 lots	Walters <sup>23</sup> Alexander	A	339
640 a.	Weihl <sup>1</sup> Joseph	B	179
one lot	Wilberger		
581 a.	Winburn <sup>25</sup> M. Henry	G	137
74 league	Wells <sup>36</sup> Wayman F.	A	343
143 a.	Wilks <sup>37</sup> William	B	260
177 a.	Wallace James P.	A	259
26 lots	Wallace James P.	A	479
369 a	Wernell <sup>120</sup> Henry	A	141
320	Whelin J. P.	C	84
80 a	Wynd A. P.	K	360
	Waldrop Wiley B.	K	16
	Wade Edmund B.	K	214
	Waldrop J. Sylvester	K	30
	Williams Walter S.	K	37
	Watts Absalom S.	K	40
	Warren John T.	K	43
	Watts Albert	K	41
326 a.	Wood <sup>47</sup> Thomas	K	44
	Weskind J. F. W.	K	62
	Warner George	K	73
	Wanslow Joseph W.	K	90
	Watson B. H.	K	129

No. of Acres	Name of Grantee No. of Survey	Book	Page
160 a.	Watson <sup>144</sup> Wiley	K	<sup>273</sup> 311
	Winson Oscar	K	312
	Wallace David	K	313
160 a.	Wheat <sup>59</sup> John	K	302
	White <sup>146</sup> William <sup>misprint</sup>	K	<sup>273</sup> 272
	Waldrop W. B.	K	16
160 a.	Wright <sup>147</sup> W. C.	K	354
	Whitlock W. P.	K	406
160 a.	Wimberly <sup>35</sup> E. A.	K	439
424 a.	Wilbey <sup>147</sup> Sam.	I	326
100 a.	Wilbey <sup>148</sup> Sam.	I	327
640 a.	Waldron C. W.	G	445
640 a.	Waldron C. W.	G	446
1280 a.	Wilcox <sup>36</sup> Charles	C	183
160 acres	Wade <sup>616</sup> L. J.	K	220
135 acres	Williams <sup>90</sup> Matthew R.	G	354
184 a.	Williams <sup>901</sup> Mathew R.	G	355
320 acres	Wade <sup>147</sup> E. B. <sup>147</sup> 24	K	<sup>242</sup> 245
- 320 a.	Warnock <sup>147</sup> J. P.	G	469
160 a.	White <sup>63</sup> J. J.	K	475
58 acres	Williams <sup>283</sup> Evan <sup>and 289 f. 41 acres</sup> <small>on waters of Williamson Co. for Berryman, 9 miles from Austin.</small>	H	6486
160 a.	Wallace R. G.	K	42
1342 a.	Wyche <sup>53</sup> P. J. Heirs	I	271, 2
400 a.	White <sup>147</sup> James G. <sup>on land</sup>	G	449
160 a.	Whitt <sup>70</sup> J. J. preemption	G	489
640	Carlson <sup>Davidson</sup> Madison Hill & Wallace, partners	H	1461
"	" " " " " J. L. Hunt <sup>act</sup>	"	1466
667 a.	" " " " " "	G	521
	Williams <sup>147</sup> W. D.	G	511
90 a.	Wilman <sup>147</sup> J. P.	G	498
160 a.	Wheat <sup>59</sup> John	K	302
	Walters Alexander	A	339
8.012	Woodland T. Ted & Edward <sup>S.F. 15313</sup>	27	126

32 a	<sup>colfield</sup> Young Jno W.	H	26
	Young R. L.	K	240
	Young W. L.	K	237
	Young B. A. <sup>Mr</sup>	K	421
	<sup>725</sup> Ybarbo Jose Antonio	I	79
	<sup>725</sup> Ybarbo Condelaria	I	78
355 a	<sup>725</sup> Ybarbo Condelaria	I	77
641 a	<sup>141</sup> York William	C	267
640 a	<sup>37</sup> Zambrano Juan A.	C	154
641 a	<sup>38</sup> Zambrano Juan A.	C	278
<sup>7130</sup>	Zeller A. <sup>comand</sup>	F	457
10 a	Zeller A. <sup>Original note</sup>	X	130

